

# Technical Support Document For the October 30, 2003 Natural Event



Prepared by the Technical Services Program  
Air Pollution Control Division  
April 26, 2004

## Table of Contents

1.0	Introduction .....	2
2.0	Ambient Particulate Data .....	3
3.0	Meteorological Data .....	11
4.0	News Accounts .....	22
5.0	Laboratory Data.....	35
6.0	Reference.....	44

## Table of Figures

Figure 1 - Upper level (700 mb or about 10,000 feet above sea level) weather map for 12Z October 30, 2003, or <i>5 AM MST October 30, 2003</i> .....	5
Figure 2 - Surface weather map for 12Z October 30, 2003, or <i>5 AM MST October 30, 2003</i> .....	6
Figure 3 - Surface weather map for 00Z October 31, 2003, or <i>5 PM MST October 30, 2003</i> .....	7
Figure 5 - Back trajectories to 36 hours for 1600 MST (2300 UTC) on October 30, 2003, .....	9
Figure 6 - Hourly PM <sub>10</sub> in ug/m <sup>3</sup> at Grand Junction and Aspen on October 30, 2003. ....	10
Figure 7 - Dense smoke from California wildfires is visible in the Southwest from a SeaWiF Project Image by NASA/GSFC – ORBIMAGE – October 29, 2003. . ....	13
Figure 8 - Portion of a Terra/MODIS image taken at 11:10 MST on October 30, 2003 .....	14
Figure 9 - Portion of a Terra/MODIS false color image for 11:10 MST on October 30, 2003....	15
Figure 10 - Drought status for the United States on October 28, 2003 .....	20
Figure 11- October 2003 percent of normal precipitation from the U.S. Climate Monitoring.....	21

## Table of Tables

Table 1 - Particulate Data for October 30, 2003 .....	4
Table 2 - Grand Junction Weather Data for October 30, 2003.....	16
Table 3 - Las Vegas Weather Data for October 29, 2003.....	17
Table 4 - Las Vegas Weather Data for October 30, 2003.....	18
Table 5 - St. George, Utah, Weather Data for October 30, 2003.....	19

# 1.0 Introduction

## PM<sub>10</sub> Standards

In July 1987, EPA promulgated National Ambient Air Quality Standards for Particulates with an aerodynamic diameter of 10 microns or less (PM<sub>10</sub>). This is a size that can be inhaled into the alveolar regions of the lungs. The standard has two forms, a 24-hour standard of 150 ug/m<sup>3</sup> and an annual arithmetic mean standard of 50 ug/m<sup>3</sup>. The 24-hour standard is attained when the expected number of exceedances for each calendar year, averaged over three years, is less than or equal to one. The estimated number of exceedances is computed quarterly using available data and adjusting for missing sample days. The annual arithmetic mean standard is attained when the annual mean, averaged over three years is less than or equal to the level of the standard. Each annual mean is computed from the average of each quarter in the year, with adjustments made for missing sample days. In both cases, a data recovery of 75 percent is needed for each calendar quarter to be considered a valid quarter of data. This standard was modified in by EPA in July 1997, but was subsequently nullified back to this form in May 1999.

EPA's Natural Events Policy enables states to demonstrate that PM<sub>10</sub> exceedances were caused by natural events (volcanic and seismic activities, wildland fires, or high winds) and therefore are not to be taken into account in determining compliance with National Ambient Air Quality Standards (NAAQS). The Natural Events Policy requires that sufficient documentation be submitted to EPA to demonstrate:

1. That an event occurred that meets the definition of a natural event. This can include monitored particulate data, videos and photographs of the event, eyewitness accounts, and news accounts.
2. That there is a cause and effect relationship between the event and the exceedance. This can include meteorological data, receptor analyses, dispersion modeling, etc.
3. Should a PM<sub>10</sub> NAAQS violation occur due to a natural event, a Natural Events Action Plan (NEAP) should be implemented. Due to past PM<sub>10</sub> exceedances
4. NEAP's are in place for Lamar and Alamosa.

In this report, the Air Pollution Control Division (APCD) provides documentation to support that PM<sub>10</sub> exceedances monitored on October 30, 2003 at Delta, Crested Butte, Mount Crested Butte and Grand Junction were caused by a natural event.

## 2.0 Ambient Particulate Data

On Thursday October 30, 2003, Delta, Crested Butte, Mount Crested Butte, and Grand Junction recorded exceedances of the twenty-four-hour  $PM_{10}$  standard with readings of 215  $\mu g/m^3$  at Delta, 177  $\mu g/m^3$  at Crested Butte, 165  $\mu g/m^3$  at Mount Crested Butte, and 234  $\mu g/m^3$  at Grand Junction. The exceedances were caused by a combination of dense smoke transported from the massive wildfires in Southern California and blowing dust from the desert Southwest and local sources. A local wildfire near Aspen also contributed to elevated particulate levels in the area.

Table 1 provides a summary of all the  $PM_{10}$  and  $PM_{2.5}$  data for the Western area of Colorado for October 30 and indicates those data that were affected by the natural event. These data have been flagged in AQS. The speciation  $PM_{2.5}$  data value has not been flagged in AQS as it is "owned" by RTI. APCD is requesting that EPA flag this data value. The table also provides  $PM_{10}$  data for the days before and after the natural event as a comparison.

Figure 1 shows the 700 millibars (mb) or 10,000-foot level features including a strong upper level low centered near northern Nevada. This low-pressure system caused strong southwesterly flow at 10,000 feet from southern California and Arizona all the way to western Colorado. The surface weather maps for 12Z (5:00 AM MST) October 30 and 00Z on October 31 (5:00 PM MST on October 30) are presented in Figures 2 and 3, respectively. These maps show a fairly deep surface low-pressure system moving from southern Nevada into western Colorado during the day of October 30. Southeasterly to southwesterly flow capable of transporting smoke and blowing dust from Arizona, Nevada, and Utah into Colorado persisted much of the day. Magenta infinity signs over station reports in these two maps show that haze, smoke, or blowing dust was observed in northern Arizona, Utah, and western Colorado. A cold Canadian air mass east of the Continental Divide protected eastern Colorado from the smoke and dust transported by this storm system.

Figures 4 and 5 show back trajectories for western Colorado for air masses at 500, 1500, and 2000 meters above ground level for midnight MST at the beginning of October 30 (0700 UTC) and 1600 MST (2300 UTC) on October 30. The back trajectories originate at 36 hours prior to the times in question. These clearly show that the flow at each level could have transported smoke from California and Arizona, affecting the first part of October 30, and blowing dust from local sources and perhaps Arizona, affecting the latter part of October 30. Surface reports and other data for October 30 suggest that dense smoke characterized the first part of the event followed by a brief reduction in haze, and finally followed by blowing dust during the afternoon and early evening hours.

Figure 6 shows the hourly  $PM_{10}$  concentrations at Grand Junction and Aspen on October 30. Elevated  $PM_{10}$  during the early morning hours gradually declined by late morning to noon. A second more intense surge of particulates is apparent in the late afternoon at Grand Junction. The late-day peak at Aspen lags behind Grand Junction by 3 to 4 hours, and this is consistent with the hypothesis that a plume of regional, blowing dust hit Grand Junction first and Aspen later. Clark County Department of Air Quality Management in Las Vegas, Nevada, was contacted during the afternoon of October 30. They indicated that blowing dust was causing

high levels of fine particulates during the afternoon and that most of the smoke had dissipated. Surface observations in Colorado, which will be discussed later in this report, also show that reports of haze or smoke were replaced by reports of haze or blowing dust later in the day. Available satellite imagery also supports the two-phase model of the event.

Table 1 - Particulate Data for October 30, 2003.

		<u>AQS #</u>	<b>PM10 STP (<math>\mu\text{g}/\text{m}^3</math>)</b>	<b>PM10 LTP (<math>\mu\text{g}/\text{m}^3</math>)</b>	<b>PM2.5 (<math>\mu\text{g}/\text{m}^3</math>)</b>
<b>10/29/2003</b>	Alamosa - ASC	08-003-0001	43	35	
	Alamosa - Municipal	08-003-0003	56	45	
	Pagosa Spgs. - School	08-007-0001	33	27	
	Mt. Crested Butte	08-051-0004	31	24	
	Steamboat Spgs.	08-107-0003	28	24	
<b>10/30/2003</b>	Alamosa - ASC	08-003-0001	80	65	
	Alamosa - Municipal	08-003-0003	99	81	
	Pagosa Spgs. - School	08-007-0001	111 *	91 *	19.1 *
	Delta	08-029-0004	<b>215 *</b>	<b>188 *</b>	33.2 *
	Crested Butte	08-051-0004	<b>177 *</b>	137 *	
	Mt. Crested Butte	08-051-0005	<b>165 *</b>	128 *	38.1 *
	Gunnison	08-051-0006	98 *	75 *	
	Durango - River City	08-067-0004	97 *	80 *	
	Durango - School	08-067-0008	104 *	86 *	29.0 *
	Durango - Tradewinds	08-067-0009	80 *	67 *	
	Durango - Cutler	08-067-0010	109 *	91 *	
	Durango - Courthouse	08-067-1001	90 *	75 *	
	Grand Jct. - MCHD	08-077-0003			35.8 *
	Grand Jct. - MCHD - collocated	08-077-0003			31.9 *
	Grand Jct. - Stocker - continuous	08-077-0014	129 (24hr) *		
	Grand Jct. - Powell	08-077-0017	<b>234 *</b>	<b>206 *</b>	12.4 *
	Grand Jct. - Powell - speciation (RTI)	08-077-0017			38.9 **
	Aspen - Library - continuous	08-097-0006	103 (24hr) *		
	Steamboat Spgs.	08-107-0003	57	48	8.2
	Telluride	08-113-0004	97 *	75 *	3.4
<b>10/31/2003</b>	Alamosa - ASC	08-003-0001	41	33	
	Alamosa - Municipal	08-003-0003	44	35	
	Pagosa Spgs. - School	08-007-0001	62	51	
	Mt. Crested Butte	08-051-0004	34	26	
	Steamboat Spgs.	08-107-0003	23	19	
<b>Bold</b> = value that exceeds the level of the NAAQS.					
* = Flagged in AQS as affected by natural event.					
** = Speciation data from RTI that needs to be flagged in AQS as affected by natural event.					

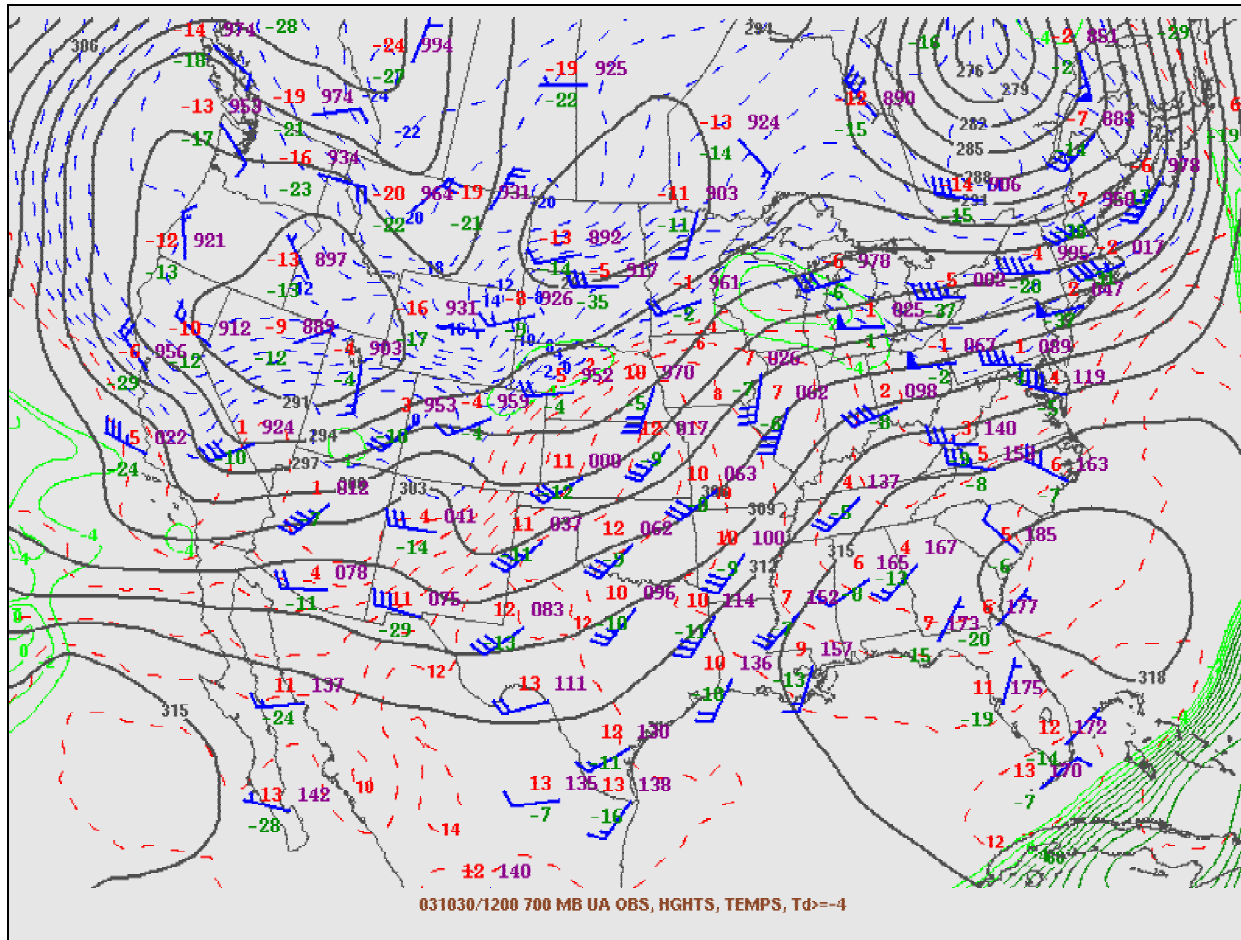


Figure 1 - Upper level (700 mb or about 10,000 feet above sea level) weather map for 12Z October 30, 2003, or 5 AM MST October 30, 2003.

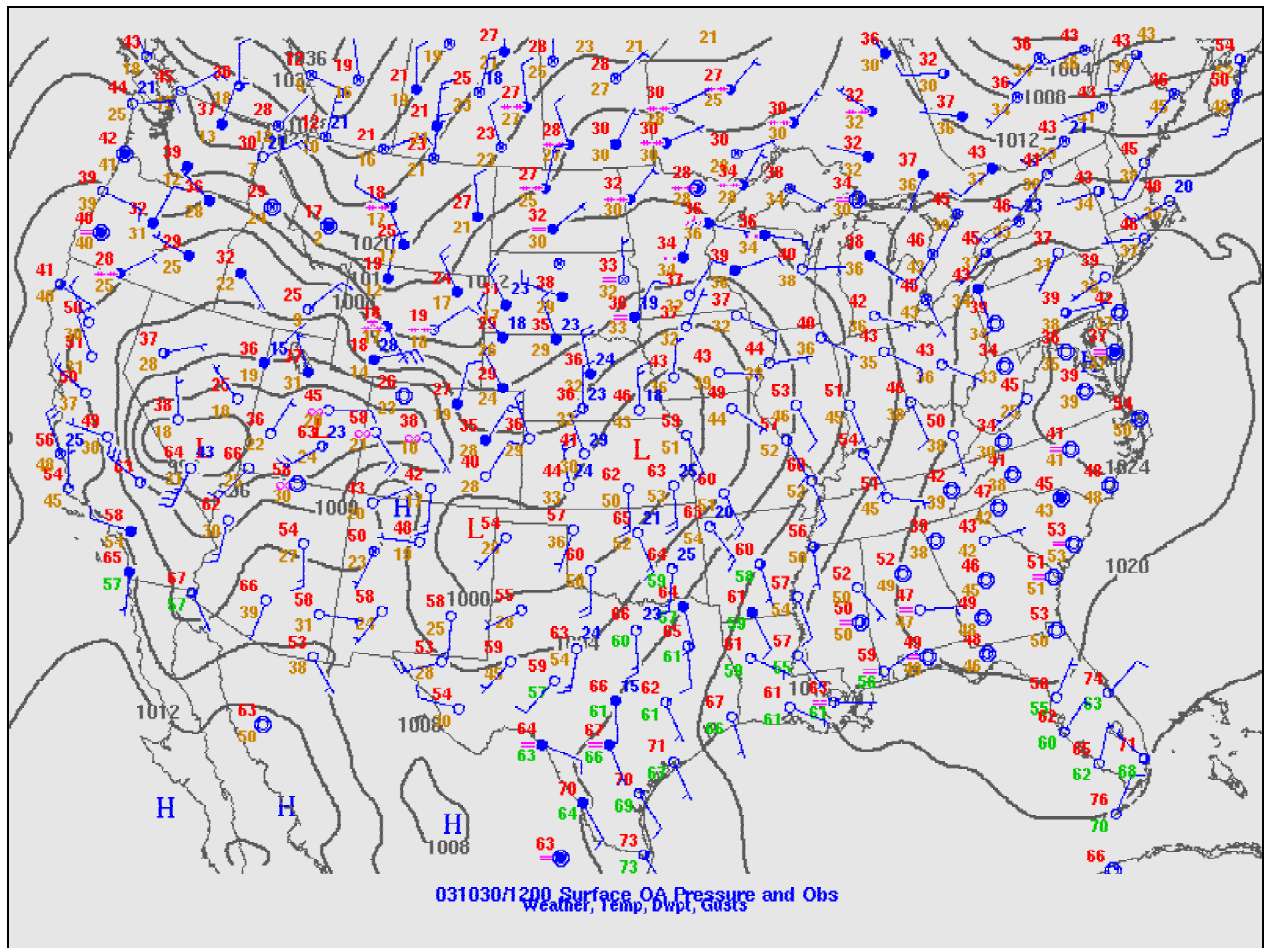


Figure 2 - Surface weather map for 12Z October 30, 2003, or **5 AM MST October 30, 2003.**

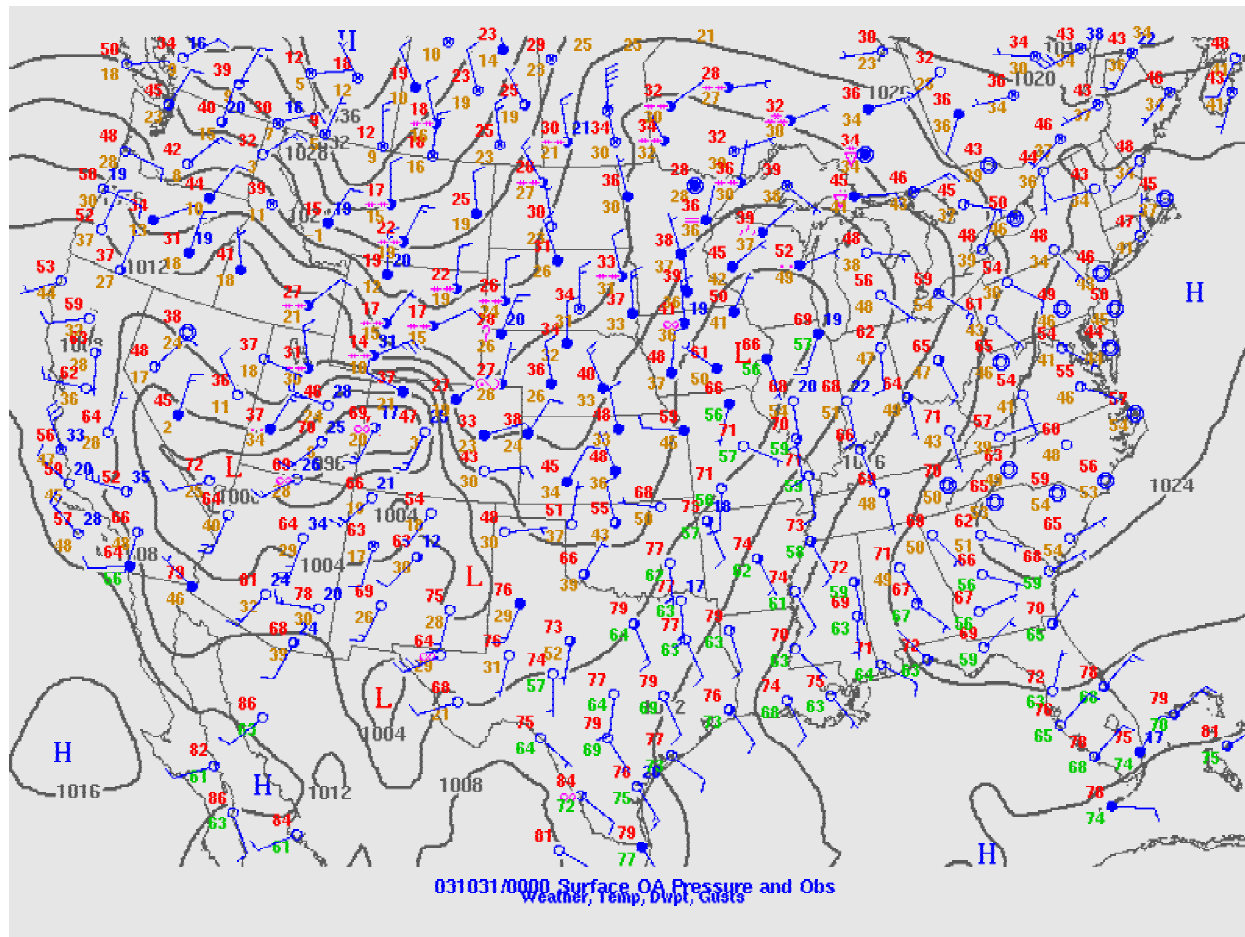


Figure 3 - Surface weather map for 00Z October 31, 2003, or **5 PM MST October 30, 2003.**



NOAA HYSPLIT MODEL  
 Backward trajectories ending at 07 UTC 30 Oct 03  
 EDAS Meteorological Data

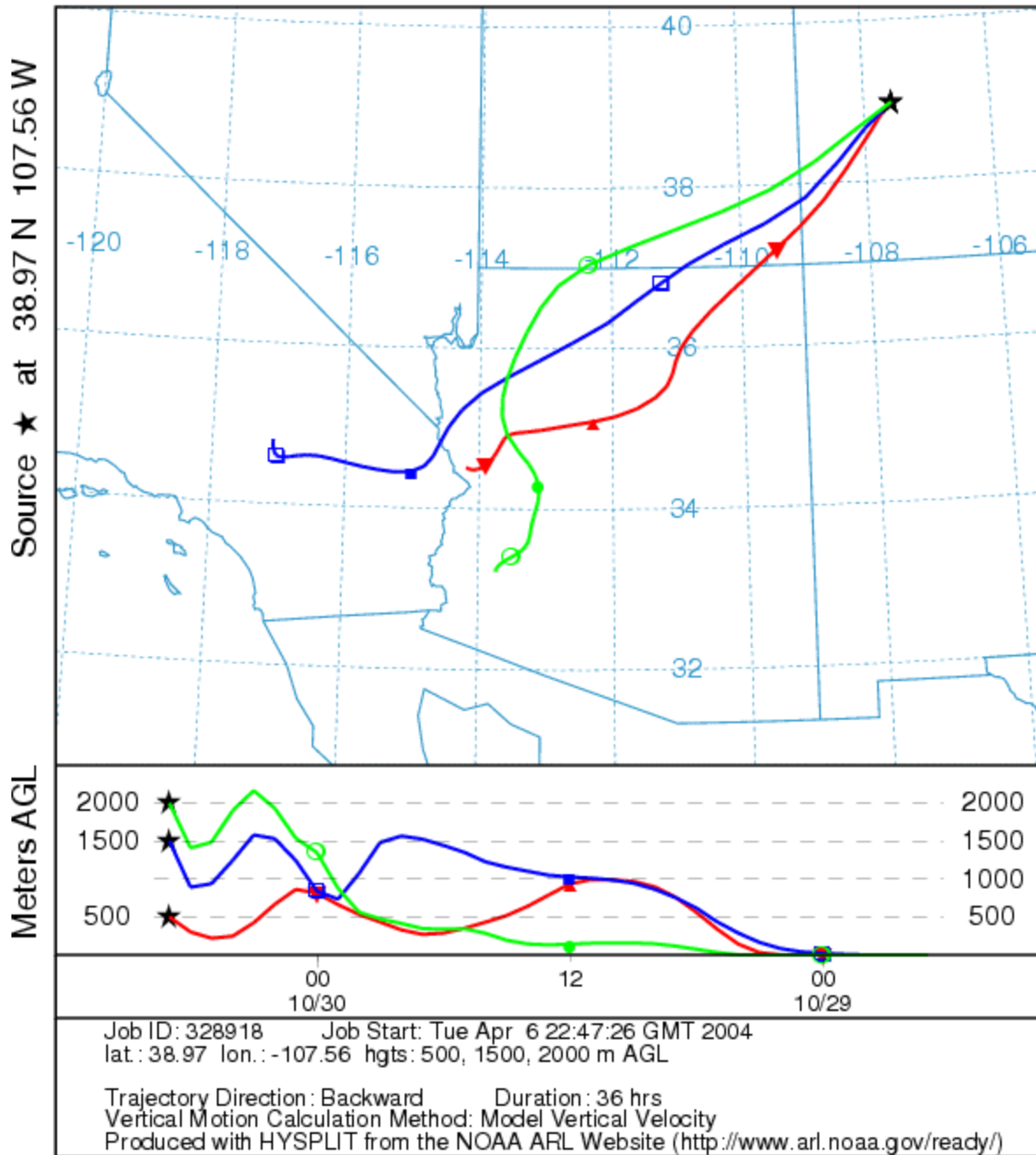


Figure 4 - Back trajectories to 36 hours for midnight MST (0700 UTC) on October 30, 2003, showing transport from California, Arizona, and Utah for air masses in western Colorado at 500, 1500, and 2000 meters above ground level.

NOAA HYSPLIT MODEL  
 Backward trajectories ending at 23 UTC 30 Oct 03  
 EDAS Meteorological Data

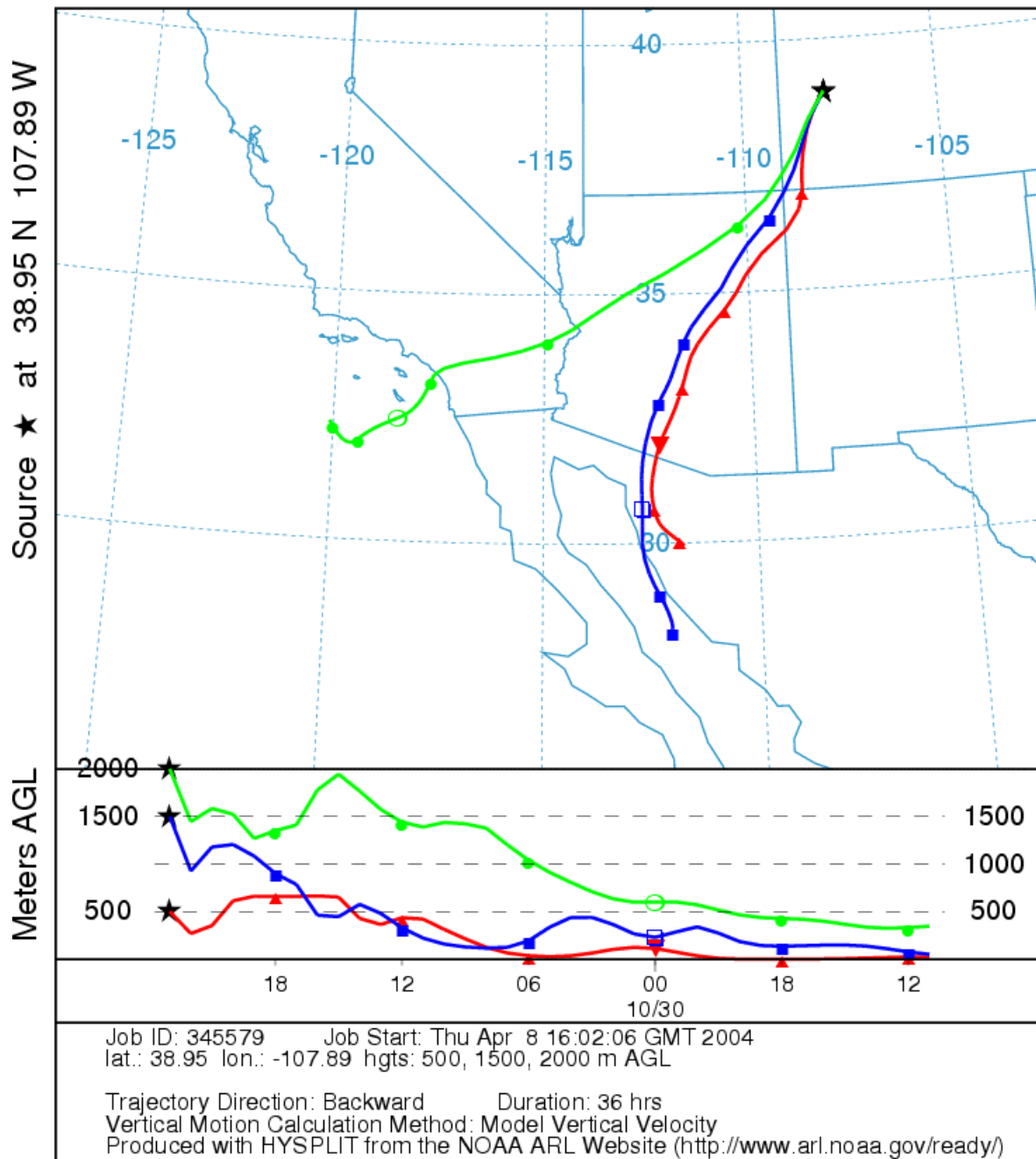


Figure 5 - Back trajectories to 36 hours for 1600 MST (2300 UTC) on October 30, 2003, showing transport from California, Arizona, and Utah for air masses in western Colorado at 500, 1500, and 2000 meters above ground level.

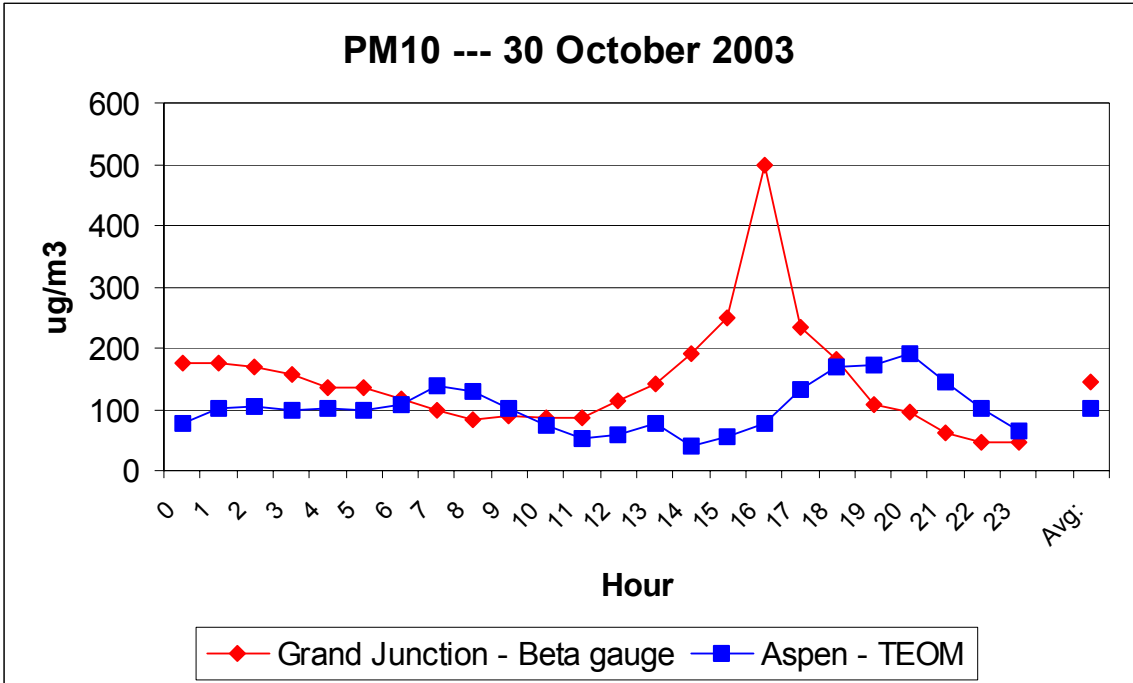


Figure 6 - Hourly PM<sub>10</sub> in ug/m3 at Grand Junction and Aspen on October 30, 2003.

### 3.0 Meteorological Data

On October 29, there was a reversal of the winds that had been blowing smoke from California out into the Pacific. Figure 7 shows a satellite image of the Southwestern U.S. on October 29. A massive, dense cloud of smoke can be seen in California and Arizona, carried by winds that had become westerly and southwesterly. Surface reports show that this smoke moved into much of the Four Corners area and western Colorado. Figure 8 shows a blowup of a portion of a satellite image for 11:10 MST on October 30. Residual smoke can be seen in this image over many of the basins and peaks of Colorado. Figure 9 is a blowup of a different section of a false-color version of the same image. In this case, the image reveals what is likely blowing dust in the desert basins between the Mogollon Rim in Arizona and Cortez, Colorado. The blowing dust manifests as a light, milky, pinkish opaque layer obscuring vegetative green on mesas and along river valleys in these areas.

The intense surface and upper level low-pressure systems over the Intermountain West generated widespread strong winds and blowing dust in Utah, Nevada, Arizona, and Colorado. Winds of 30 to 45 mph were common across the entire multi-state region. Sustained winds of 30 mph or higher and gusts of 45 mph or higher have been identified as a precondition for significant blowing dust in eastern Colorado when soils are dry (see reference for the *Natural Events Action Plan for High Wind Events – Lamar, Colorado*). These rough, wind-speed thresholds are probably applicable throughout the western U.S.

The weather data for October 30, 2003, at Grand Junction is presented in Table 2 below. The first 10 hours of the day saw visibilities of 3 to 7 miles in “haze” and light-to-moderate winds. This was likely the period most affected by smoke originally from the fires in California. The afternoon and early evening hours were characterized by visibilities of 4 to 5 miles in blowing dust and haze. One gust of 40 mph is reported at this station at 12:50 MST.

Table 3 and 4 list weather observations for Las Vegas on October 29 and 30, respectively. Light-to-moderate winds and visibilities of 1.75 to 6 miles were observed for most of the day on October 29. Smoke from California was the dominant source of poor visibility on October 29. Table 5 shows that visibilities were reduced to 3 to 6 miles in haze, smoke, and dust during the morning hours of October 30. Wind gusts of 44 and 45 mph were recorded on October 30.

Weather observations on October 30, 2003, for St. George, Utah, are listed in Table 5. Wind gusts of 40 to 48 mph were measured during much of the day. Visibilities dropped as low as 7 miles.

Haze or smoke was reported throughout much of western Colorado on October 20, 2003. These observations are reproduced in Attachment A. Winds were light-to-moderate during the morning hours in much of the western portion of the state. By late morning, gusts of 41 to 47 mph were measured at Kremmling, Monarch Pass, and Wolf Creek Pass. By 1:00 MST, gusts of 40 to 55 mph were observed at a number of valley and mountain pass locations. At 2:00 MST, Alamosa reported a gust of 45 mph and visibility of only three quarters of a mile. At 3:00 MST, Alamosa reported haze and a gust of 44 mph. Alamosa’s highest 24-hour PM<sub>10</sub> concentration on October 30 was 99 ug/m<sup>3</sup>. Presumably, this was the result of both dust and smoke. Gusty winds

continued through the early evening hours on the Western Slope. Telluride, Durango, Gunnison, and Pagosa Springs also recorded 24-hour PM<sub>10</sub> concentrations in the neighborhood of 100 ug/m<sup>3</sup>.

The following Grand Junction National Weather Service link provides a description of the smoke event of October 30 in western Colorado:  
<http://www.crh.noaa.gov/gjt/oct03smoke.htm>. This article reports “Smoke began to filter into the Great Basin on Wednesday, and by Thursday morning (October 30), it had moved into eastern Utah and western Colorado. Residents woke to a murky sky and a red, ominous sunrise.”

The Grand Junction National Weather Service Office summary for October 30, reported on October 31, indicated the following:

WEATHER CONDITIONS

THE FOLLOWING WEATHER WAS RECORDED YESTERDAY.

LIGHT RAIN

HAZE

SANDSTORM

Figure 10 shows that the U.S. Drought Monitor had declared that a *severe, extreme, or exceptional* drought was underway in most of the Southwest including western Colorado. This designation was made on October 30 and was representative of conditions in place on October 28. The October 2003 percent of normal precipitation map in Figure 11 indicates that most of the Southwest had received significantly less than 40% of the normal precipitation for October, a month that does not normally see a great deal of precipitation in this region.

There is sufficient evidence of dry soils, high winds, blowing dust, and transport of smoke from California to explain the PM<sub>10</sub> exceedances recorded in Colorado on October 30, 2003. Other anecdotal evidence for this event is presented in additional documentation of the exceedances.

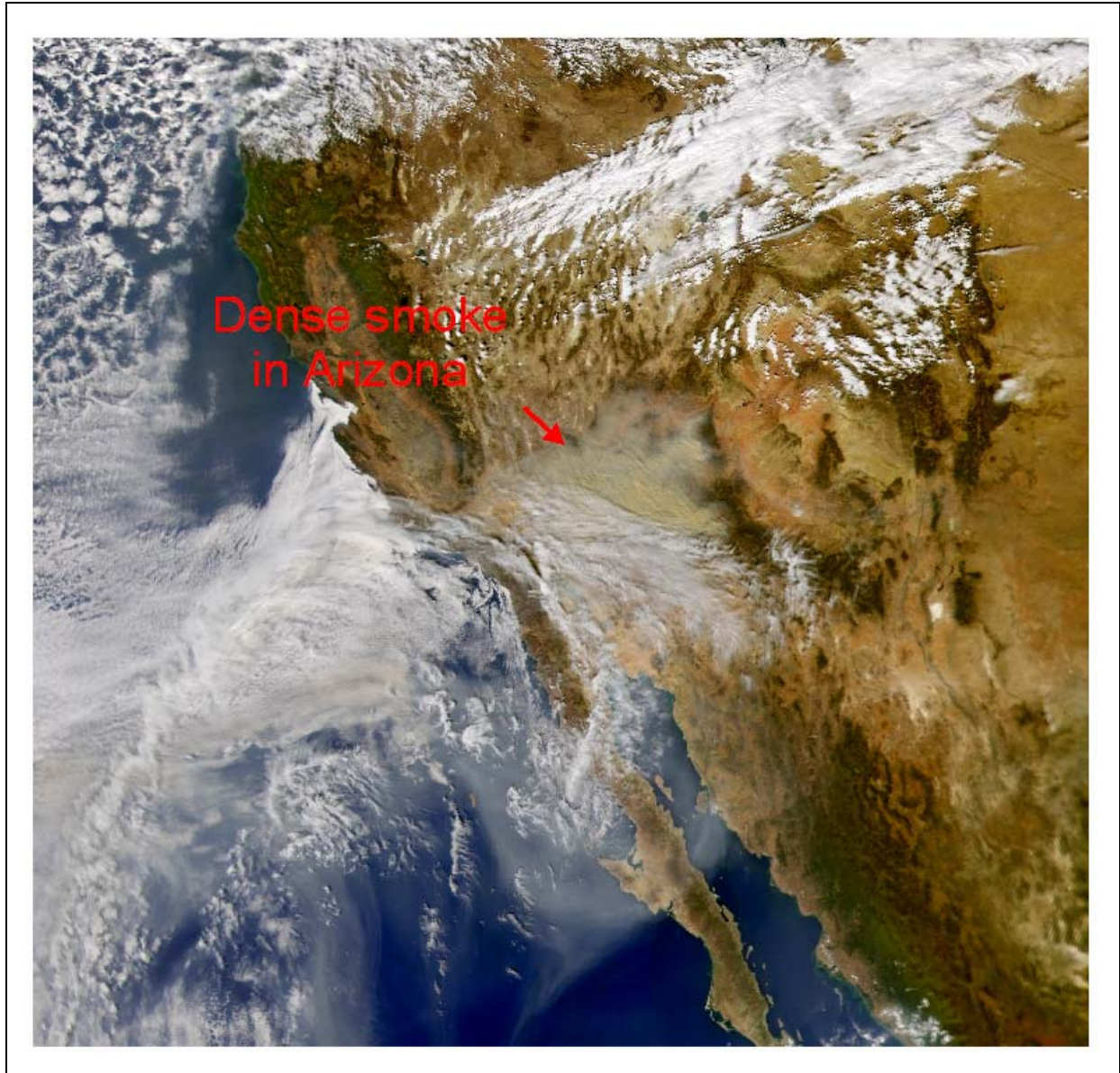


Figure 7 - Dense smoke from California wildfires is visible in the Southwest from a SeaWiF Project Image by NASA/GSFC – ORBIMAGE – October 29, 2003. .

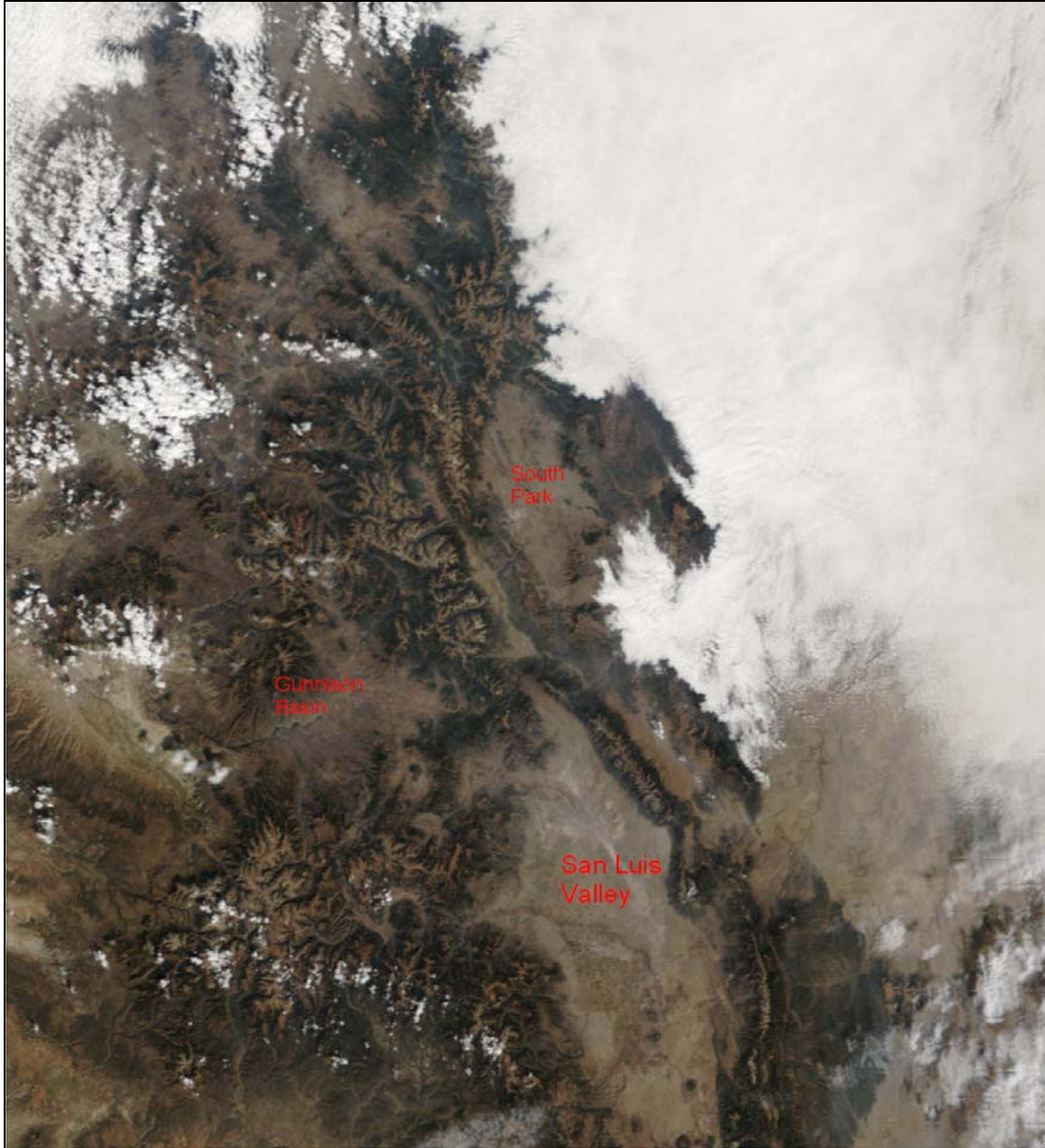


Figure 8 - Portion of a Terra/MODIS image taken at 11:10 MST on October 30, 2003 (see: <http://rapidfire.sci.gsfc.nasa.gov/production/2003303/>), showing residual smoke over basins and ranges in Colorado and upslope cloud cover to the east of the Front Range.

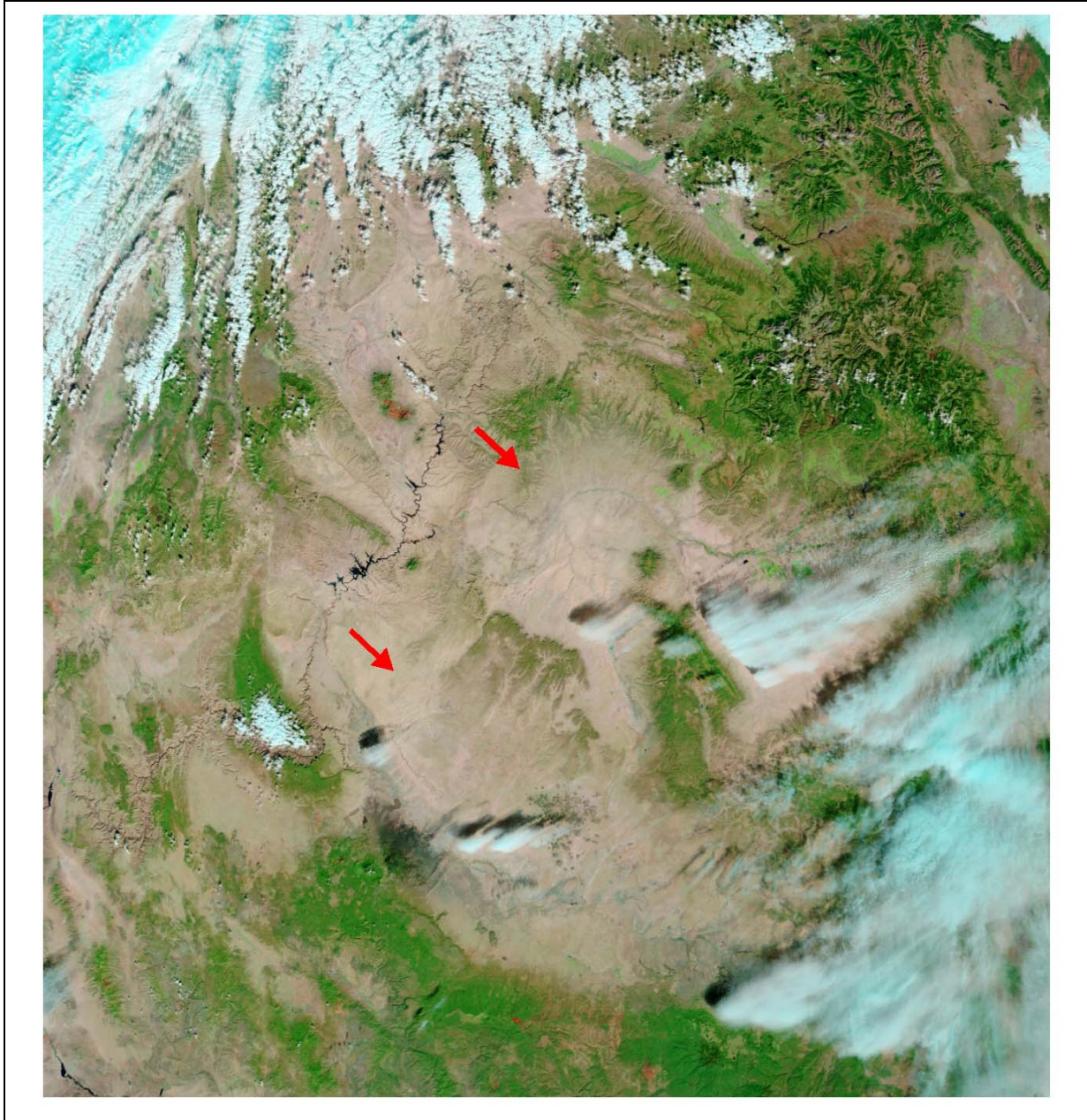


Figure 9 - Portion of a Terra/MODIS false color image for 11:10 MST on October 30, 2003 (see: <http://rapidfire.sci.gsfc.nasa.gov/production/2003303/>), showing milky, pinkish, blowing dust over desert basins from the green Mogollon Rim in Arizona to the Cortez, Colorado, area. The dust obscures vegetative green and the articulation of rivers and land forms normally clearly visible from space.



Table 2 - Grand Junction Weather Data for October 30, 2003.

Time(MST)	Temperature ° F	Dew Point ° F	Relative Humidity %	Wind Speed mph	Wind Gust mph	Wind Direction	Quality control	Sea level pressure in	Weather conditions	Visibility miles	Precipitation 1hr in
21:50	51.8	24.8	35	0			Caution		mostly cloudy	10.00	
20:50	53.6	24.8	32	13		W	Caution	29.48	mostly clear	10.00	
20:00	60.8	21.2	22	21		WNW	Caution		partly cloudy	10.00	
19:50	62.6	21.2	20	20	36	WNW	Caution	29.40	mostly clear	8.00	
18:50	66.2	17.6	15	14		SW	Caution	29.35	<b>haze</b>	<b>5.00</b>	
17:50	64.4	19.4	18	5		WSW	Caution	29.32	<b>haze, blowing dust</b>	<b>5.00</b>	
16:50	69.8	19.4	15	15	20	SSW	Caution	29.28	<b>haze, blowing dust</b>	<b>4.00</b>	
15:50	69.8	21.2	16	15	28	S	Caution	29.27	<b>haze, blowing dust</b>	<b>4.00</b>	
14:50	69.8	23.0	17	22	35	S	OK	29.27	<b>haze, blowing dust</b>	<b>4.00</b>	
13:50	69.8	21.2	16	20	33	SSW	OK	29.29	clear	9.00	
12:50	69.8	21.2	16	23	<b>40</b>	SSW	OK	29.30	clear	9.00	
11:50	68.0	19.4	16	25	39	SSW	OK	29.33	clear	9.00	
10:50	66.2	21.2	18	20	24	SSW	OK	29.37	mostly clear	10.00	
9:50	64.4	23.0	20	20	32	SSE	OK	29.36	partly cloudy	<b>7.00</b>	
8:50	60.8	24.8	25	18	24	SSE	OK	29.39	partly cloudy	<b>7.00</b>	
7:50	57.2	26.6	31	15		SE	OK	29.40	clear	<b>7.00</b>	
6:50	57.2	24.8	28	17		SSE	OK	29.38	<b>haze</b>	<b>6.00</b>	
5:50	55.4	21.2	26	16		SSE	OK	29.38	<b>haze</b>	<b>6.00</b>	
4:50	57.2	21.2	24	21		SE	OK	29.36	<b>haze</b>	<b>6.00</b>	
3:50	59.0	19.4	21	20	30	SSE	OK	29.34	<b>haze</b>	<b>6.00</b>	
2:50	60.8	19.4	20	10		SSE	OK		<b>haze</b>	<b>6.00</b>	
1:50	60.8	17.6	18	16	21	SSE	OK	29.33	<b>haze</b>	<b>5.00</b>	
0:50	62.6	19.4	19	5	18	SSE	OK	29.34	<b>haze</b>	<b>3.00</b>	
0:35	62.6	19.4	19	8		SSE	OK		<b>haze</b>	<b>3.00</b>	

[NOAA Cooperative Institute for Regional Prediction](#)

Copyright © 2004 NOAA Cooperative Institute for Regional Prediction. All Rights Reserved.  
For Questions or Comments about this page or MesoWest contact [mesowest@met.utah.edu](mailto:mesowest@met.utah.edu)

Table 3 - Las Vegas Weather Data for October 29, 2003.

Time(PST)	Temperature ° F	Dew Point ° F	Relative Humidity %	Wind Speed mph	Wind Gust mph	Wind Direction	Quality control	Sea level pressure in	Altimeter in	Weather conditions	Visibility miles
23:55	71.6	35.6	27	23	32	SSW	OK	29.41	29.48	smoke	6.00
22:55	71.6	35.6	27	22	31	SW	OK	29.41	29.48	smoke	6.00
21:55	73.4	37.4	27	20	28	S	OK	29.44	29.50	smoke	6.00
20:55	73.4	46.4	38	12	20	S	OK	29.46	29.52	smoke	6.00
19:55	75.2	44.6	34	10		S	OK		29.51	smoke	3.00
18:55	77.0	41.0	28	15	20	S	OK	29.47	29.52	smoke	4.00
17:55	75.2	39.2	27	9		S	OK	29.47	29.53	smoke	4.00
16:55	78.8	37.4	23	12		S	OK	29.47	29.52	smoke	4.00
16:35	78.8	37.4	23	13		S	OK		29.52	smoke	4.00
16:05	78.8	37.4	23	7		SSE	OK		29.53	smoke	3.00
15:55	80.6	39.2	23	9		SSE	OK	29.47	29.53	smoke	2.50
14:55	80.6	37.4	21	13	18	S	OK	29.48	29.54	smoke	2.00
13:55	82.4	37.4	20	13		S	OK	29.48	29.54	smoke	2.00
13:10	82.4	35.6	19	10		SSW	OK		29.57	smoke	3.00
12:55	82.4	35.6	19	15		SSW	OK	29.51	29.58	smoke	1.75
12:05	82.4	35.6	19	15		S	OK		29.59	smoke	1.75
11:55	82.4	33.8	17	16	24	S	OK	29.54	29.60	smoke	1.75
10:55	84.2	33.8	16	14		SSW	OK	29.55	29.62	smoke	1.75
10:40	84.2	32.0	15	16		SSW	OK		29.62	smoke	1.75
10:20	82.4	30.2	15	18		SSW	OK		29.63	smoke	2.00
9:55	73.4	37.4	27	0			OK	29.59	29.65	smoke	5.00
8:55	69.8	39.2	33	7		N	OK	29.62	29.68	smoke	6.00
7:55	66.2	37.4	35	6		WNW	OK	29.62	29.68	partly cloudy	10.00
6:55	64.4	33.8	32	6		W	OK	29.62	29.68	partly cloudy	10.00
5:55	62.6	33.8	34	3		W	OK	29.62	29.68	mostly clear	10.00
4:55	62.6	33.8	34	6		W	OK	29.63	29.69	clear	10.00
3:55	64.0	34.0	33	3		WNW	OK	29.63	29.70	clear	10.00
2:55	64.4	32.0	30	7		W	OK	29.65	29.71	clear	10.00
0:55	68.0	30.2	24	0			OK	29.68	29.74	clear	10.00

[NOAA Cooperative Institute for Regional Prediction](#)

Copyright © 2004 NOAA Cooperative Institute for Regional Prediction. All Rights Reserved.  
 For Questions or Comments about this page or MesoWest contact [mesowest@met.utah.edu](mailto:mesowest@met.utah.edu)

Table 4 - Las Vegas Weather Data for October 30, 2003.

Time(PST)	Temperature ° F	Dew Point ° F	Relative Humidity %	Wind Speed mph	Wind Gust mph	Wind Direction	Quality control	Sea level pressure in	Altimeter in	Weather conditions	Visibility miles
23:55	57.2	35.6	44	17	22	SW	OK	29.67	29.70	mostly clear	8.00
22:55	57.2	33.8	41	12		SSW	OK	29.68	29.72	mostly clear	8.00
21:55	59.0	35.6	41	10		SSW	OK	29.67	29.71	mostly clear	8.00
20:55	60.8	35.6	39	8	17	SSW	OK	29.65	29.69	mostly clear	8.00
19:55	62.6	35.6	36	16	23	SW	OK	29.61	29.66	mostly clear	8.00
18:55	64.4	35.6	34	13	20	SW	OK	29.59	29.64	mostly clear	8.00
17:55	64.4	35.6	34	13	21	SW	OK	29.57	29.62	mostly clear	8.00
16:55	66.2	33.8	30	20	29	SW	OK	29.56	29.60	mostly clear	8.00
15:55	69.8	30.2	23	22	32	SW	OK	29.54	29.59	mostly clear	8.00
14:55	69.8	26.6	20	22	28	SSW	OK	29.52	29.58	mostly clear	8.00
13:55	69.8	26.6	20	17	26	SW	OK	29.51	29.57	mostly clear	8.00
12:55	69.8	26.6	20	20	26	SSW	OK	29.50	29.56	mostly clear	8.00
11:55	69.8	30.2	23	18	29	SSW	OK	29.50	29.56	mostly clear	7.00
10:55	68.0	28.4	23	23	28	SSW	OK	29.50	29.56	mostly clear	7.00
9:55	69.8	33.8	26	24	36	SSW	OK	29.46	29.52	haze, smoke	6.00
8:55	68.0	35.6	30	31	45	S	OK	29.45	29.50	haze, smoke	6.00
7:55	68.0	35.6	30	23	32	SSW	OK	29.45	29.51	haze, smoke	6.00
6:55	66.2	33.8	30	22	37	S	OK	29.43	29.49	haze, smoke	6.00
5:55	66.2	33.8	30	32	44	SSW	OK	29.39	29.45	dust, smoke	3.00
4:55	66.2	33.8	30	26	37	S	OK	29.38	29.45	haze, smoke	3.00
4:05	66.2	33.8	30	24	31	S	OK		29.44	haze, smoke	4.00
3:55	66.2	33.8	30	16	30	S	OK	29.38	29.44	haze, smoke	6.00

[NOAA Cooperative Institute for Regional Prediction](#)

Copyright © 2004 NOAA Cooperative Institute for Regional Prediction. All Rights Reserved.  
 For Questions or Comments about this page or MesoWest contact [mesowest@met.utah.edu](mailto:mesowest@met.utah.edu)

Table 5 - St. George, Utah, Weather Data for October 30, 2003.

Time(MST)	Temperature ° F	Dew Point ° F	Relative Humidity %	Wind Speed mph	Wind Gust mph	Wind Direction	Quality control	Altimeter in	Weather conditions	Visibility miles
23:15	60.8	28.4	29	10		NW	OK	29.70	overcast	10.00
22:55	62.6	28.4	27	14		W	OK	29.70	overcast	10.00
22:35	62.6	28.4	27	17		W	OK	29.69	overcast	10.00
22:15	62.6	28.4	27	15		W	OK	29.68	overcast	10.00
21:55	62.6	26.6	25	20	23	W	OK	29.68	overcast	10.00
21:35	62.6	26.6	25	22		W	OK	29.67	overcast	10.00
21:15	62.6	26.6	25	22	26	W	OK	29.66	overcast	10.00
20:55	62.6	26.6	25	17	25	W	OK	29.65	overcast	10.00
20:35	62.6	24.8	24	22	26	W	OK	29.64	overcast	10.00
20:15	62.6	24.8	24	16		W	OK	29.64	overcast	10.00
19:55	64.4	24.8	22	17		WNW	OK	29.64	overcast	10.00
19:35	64.4	23.0	20	15	22	W	OK	29.64	overcast	10.00
19:15	64.4	23.0	20	17		W	OK	29.64	overcast	10.00
18:55	64.4	23.0	20	15		W	OK	29.63	overcast	10.00
18:35	64.4	21.2	19	13		W	OK	29.62	mostly cloudy	10.00
18:15	64.4	21.2	19	17		W	OK	29.61	mostly cloudy	10.00
17:55	66.2	21.2	18	18	24	W	OK	29.60	mostly clear	10.00
17:35	66.2	21.2	18	20	28	W	OK	29.59	clear	10.00
17:15	66.2	21.2	18	17	35	W	OK	29.58	clear	10.00
16:55				24	39	W	OK	29.56	clear	10.00
16:35				35	40	W	OK	29.54	clear	10.00
16:15	69.8	21.2	16	25	38	W	OK	29.55	clear	10.00
15:55				37	40	W	OK	29.52	mostly clear	10.00
15:35	71.6	23.0	16	31	38	W	OK	29.53	partly cloudy	10.00
15:15	71.6	24.8	17	23	37	SW	OK	29.53	partly cloudy	10.00
14:55	73.4	26.6	17	29	36	SW	OK	29.52	mostly clear	10.00
14:35	73.4	26.6	17	21	36	WSW	OK	29.52	clear	10.00
14:15	71.6	24.8	17	32	44	WSW	OK	29.50	clear	10.00
13:55	73.4	24.8	16	28	35	W	OK	29.51	clear	10.00
13:35				30	45	W	OK	29.49	clear	9.00
13:15				35	46	W	OK	29.48	clear	10.00
12:55				37	48	W	OK	29.48	clear	8.00
12:35	73.4	24.8	16	30	45	W	OK	29.49	clear	9.00
12:15	73.4	24.8	16	33	44	W	OK	29.49	clear	9.00
11:55	73.4	24.8	16	18	36	WSW	OK	29.50	clear	10.00
11:35	73.4	23.0	15	21	36	SW	OK	29.49	clear	10.00
11:15	73.4	23.0	15	21	40	WSW	OK	29.50	clear	7.00
10:55	73.4	24.8	16	22	26	WSW	OK	29.50	clear	10.00

[NOAA Cooperative Institute for Regional Prediction](http://www.noaa.gov)

Copyright © 2004 NOAA Cooperative Institute for Regional Prediction. All Rights Reserved.

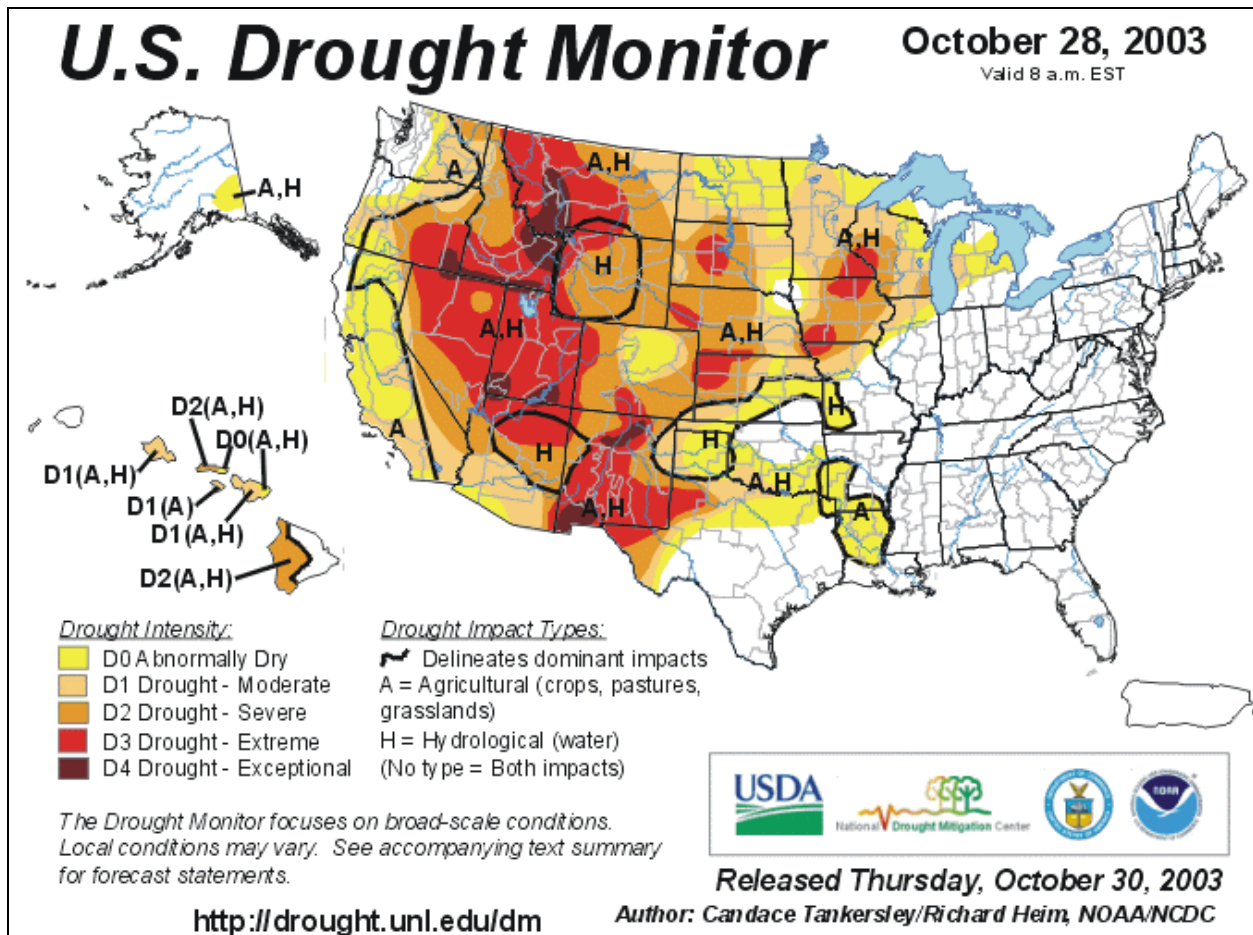


Figure 10 - Drought status for the United States on October 28, 2003 (source: the USDA, NOAA, and the National Drought Mitigation Center at: <http://drought.unl.edu/monitor/monitor.html>, released on October 30, 2003).

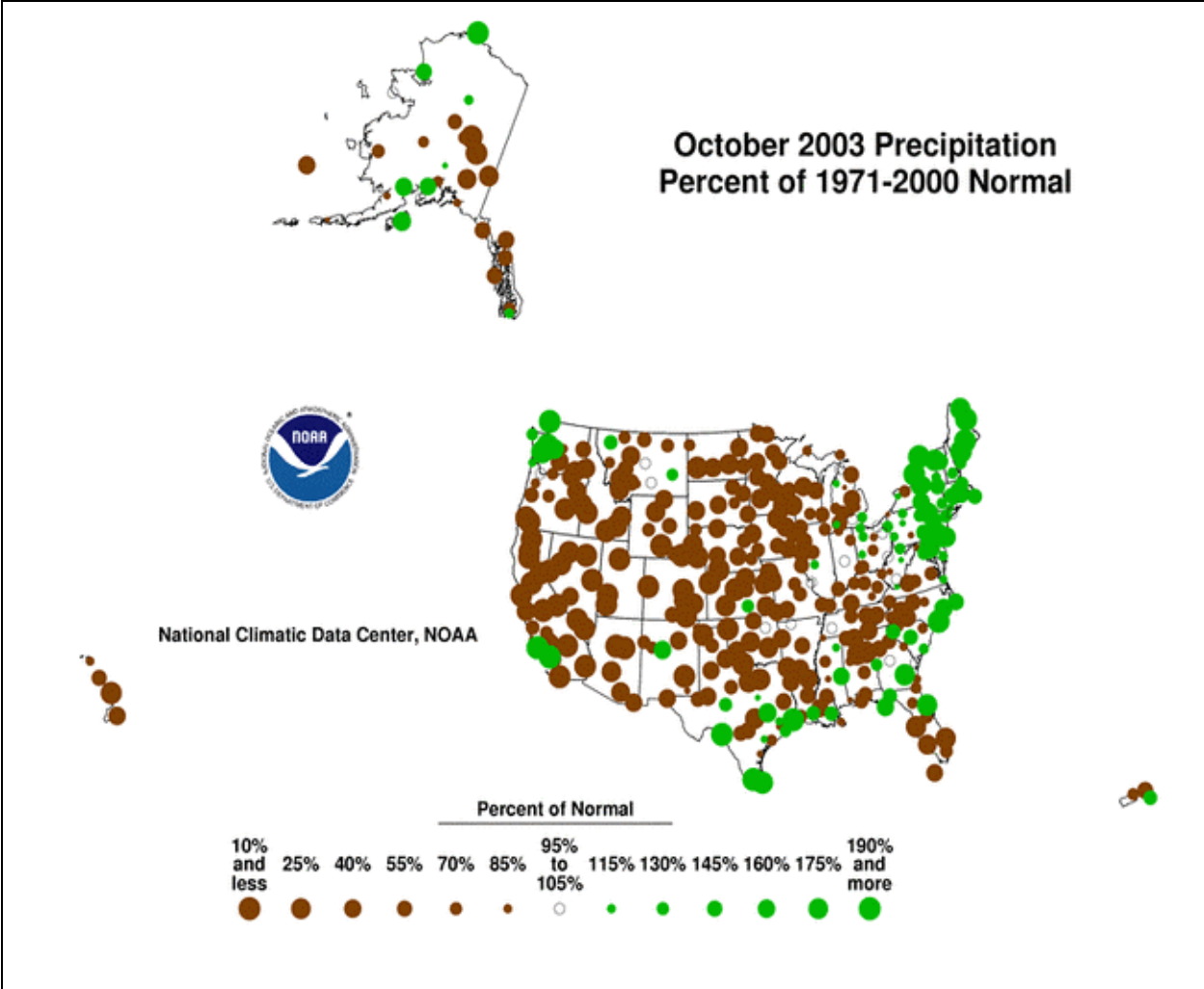


Figure 11- October 2003 percent of normal precipitation from the U.S. Climate Monitoring National Climate Summary for October 2003 presented at:  
<http://www.ncdc.noaa.gov/oa/climate/research/2003/oct/currentmonth.html>

# 4.0 News Accounts



Search  GJSentinel.com for

- Menu
- News**
  - Obituaries
  - Opinion
  - The Blotter
  - Photos
- Sports**
  - Preps
  - College
  - Professional
  - Outdoors
- Features**
  - Out & About
  - Entertainment
  - Games
  - Food
  - You said it!
  - Announcements
- Health**
  - Archives
- Money**
  - Stocks
  - Lottery
- Weather**
  - National
- Classifieds**
  - Employment
  - Real Estate
  - Automotive
  - Merchandise
- Shop&Save**
  - Advertisers
- How To**
  - Subscribe
  - Buy a print ad
  - Buy an online ad
  - Staff directory
  - Reach web staff

## News

### 10.31.03 Smoky haze from Calif. is harmful, official says

By ERIN McINTYRE *The Daily Sentinel*

The smoky skies in the Grand Valley, caused by the California wildfires, are unhealthy, a Health Department official said.

"We're up into the unhealthy stages of particulates," said Perry Buda, Mesa County Health Department air quality specialist.

A haze becomes visible when there are 50 micrograms of particulates per cubic meter of air, Buda said. The concentration of smoke-generated particulates measured three to four times that amount Thursday.

"When you drop down to five miles visibility ... you're looking at impacted air quality," Buda said.

The amount of smoke in the air may irritate people suffering from allergies or asthma, said Dr. William Scott, who specializes in treating those afflictions.

"There are some people who will be affected more by it — if you're asthmatic, you might want to stay inside," Scott said. People who are more sensitive to smoke may experience burning eyes or a cough, he said.

Buda advised people to stay inside if they're concerned about the smoke and said a good idea would be to limit outdoor exercise and close windows — especially for the young and elderly and for those with respiratory problems.

"If you have to be outdoors for a period of time, you might want to wear a filter mask," Buda said. The American Lung Association suggested using a damp cloth to cover noses and mouths if people have to go outside.

"I don't think people should panic ... but maybe it's not the best day for a three-mile bike ride," Scott said.

The smoke arrived in the Grand Valley late Wednesday on a slow-moving trough of northeasterly wind that was helping to the quell fires in southern California.

The brown smudge carried on erratic winds concealed the rim of the valley, leaving only a blurry outline of the Bookcliffs' shadow.

"This is directly related to the fires in southern California," said John Kyle, program director at the National Weather Service office in Grand Junction.





[Write to the editor](#)

[Set my homepage](#)

Nearly 650,000 acres had burned or continued to blaze in southern California on Thursday, according to the National Interagency Fire Center.

Air quality professionals and forecasters said the smoke will probably be around through the weekend and longer if the fires aren't contained by next week.

A chance of rain in Grand Junction may help clear up the air a bit later this week, but light precipitation in California may not bring much relief for the fires overall, said Brian Avery, National Weather Service hydrologist.

"It might help a little, but it doesn't look like they're going to be too strong," he said.

{M4Erin McIntyre can be reached via e-mail at [emcintyre@gjds.com](mailto:emcintyre@gjds.com).

[Email this page to a friend](#)

© 2003 Cox Newspapers, Inc. - **The Daily Sentinel**

By using this service, you accept the terms of our [visitor agreement](#) and [privacy policy](#).

Registered site users, you may [edit your profile](#).



Home About Us Contact KKCO Advertise On 11 Commercial Production Programm



TOP STORIES

Go Back

- News
- Weather
- Sports
- Meet The Staff
- Community Calendar
- Features
- 11 Listens
- Local Links
- Local Movie Times
- Jobs
- Goto "Shop NBC"

● SMOKE CLOUDS WESTERN SLOPE SKIES

Residents in Western Colorado wake up to a blanket of haze Thursday morning. The National Weather Service says it's the result of wildfires burning in Southern California. A strong area of low pressure developing over the northwest United States is bringing a west/southwest flow of air to the Grand Valley. Officials with the National Weather Service say that a cold front over the last 24 hours is enabling the smoke to settle here. Winds gusting up to 41 miles per hour prompted officials to issue a red flag warning for the Western Slope. We could continue to see smoke for the next several days. Health officials are urging people with breathing problems to take extra precautions until the smoke clears.

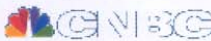
10/30/03



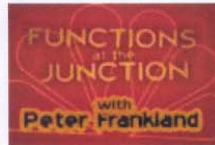
Smoke from Southern Calif  
Now in Grand Valle

Go Back

© KKCO NBC 11 News - All Rights Reserved



Functions at the Junction



Wednesdays  
at 10 p.m.!

Legal Line



Thursdays from  
10-10:35 p.m.!

Angels Among Us



Last Wednesday  
of every month  
6:30 am Noon and  
5:30pm

Business T



1st & 3rd  
5:30 pm

Community Focus:



Every Monday morning  
on 11 Today

Reel Time



Friday at 6:30 am

Pet of the Month



Every Tuesday  
On 11 Today

Grand Power Stu  
W



Wednesd  
and :

Monday, November 10, 2003

# Aspen Daily News

"If you don't want it printed, don't let it happen."

517 E. HOPKINS \* ASPEN, COLORADO 81611 \* PHONE: (970)925-2220

10/30/03

## Wildfire strikes Old Snowmass

By Adam Preskill and Thomas Watkins

OLD SNOWMASS - A handful of homes along Snowmass Creek Road in Old Snowmass had to be evacuated Thursday as a wildfire believed to have originated on Walt Disney Co. CEO Michael Eisner's ranch swept west up a ridge into federal lands.

The fire was only 5 percent contained by sundown, having consumed about 25 acres of wooded hillside despite the efforts of 55 firefighters called in from Snowmass Village, Aspen, Basalt and other fire districts. Only one small outbuilding has been damaged in the fire so far, and a small crew stayed on the scene overnight with three trucks to protect nearby structures.

Although the cause of the fire is still unconfirmed, officials believe it began sometime before noon when a tree knocked over some power lines near Eisner's mansion, located about 9.5 miles up Snowmass Creek Road near Snowmass Ski Area's Campground lift.

"One of the Snowmass firemen said he saw a tree that had fallen on an electric wire. That could easily be the source of ignition, but we haven't confirmed anything," Pitkin County Sheriff Bob Braudis said from the incident command center, with thick plumes of yellow smoke billowing behind him.

Snowmass Creek resident Tom Carroll, who evacuated his cabin but remained behind to share his knowledge of the terrain with fire personnel, was scouting the woods near his property Thursday morning in anticipation of a weekend elk hunt when he spotted the flames.

"We thought it was just smoke from the Boulder fire until it got really thick and we realized it was its own fire," Carroll said.

After igniting in a grove of trees on the flats east of Snowmass Creek Road, the blaze spread northwest across the road and up a wooded ridgeline, driven by heavy winds. Wind will likely continue to be a major problem for fire crews for the next few days, with gusts up to 70 miles per hour expected overnight and more blustery weather forecast for today.

In fact, all across the western United States, the weather conditions are ripe for wildfire. The National Weather Service has issued a 48-hour "red-flag warning" for Colorado and southern Utah, calling for increased fire precautions because of the high winds, low humidity and overly dry vegetation.

Pitkin County has adopted the weather service's red-flag warning, as have several other local jurisdictions. Front Range communities are struggling with wildfires as well, including a 3,500-acre blaze outside Boulder also thought to have been started by fallen power lines.

[http://www.aspendailynews.com/Search\\_Articles/view\\_search\\_article.cfm?OrderNumber...](http://www.aspendailynews.com/Search_Articles/view_search_article.cfm?OrderNumber...) 11/10/2003

Although the sheriff's department did not enforce mandatory evacuations in Old Snowmass, all residents within a one-mile radius were advised to leave their homes. The county's Emergency Preparedness System - an automated "reverse-911" advisory tool implemented by the sheriff's department just last month - was used to warn residents of the situation.

No information was available on how many residences were contacted by the automated system, nor were officials able to determine how many people actually heeded that evacuation order. Estimates varied from six to 20.

Although the fire showed no signs of slowing as night fell, officials did allow those residents who had chosen to evacuate to return to their homes. But Nancy Schultz, a caretaker at Eisner's ranch, said that while her husband intended to stay behind to assist firefighters camping out on the property, she would be spending the night elsewhere.

"It's too close - it's right outside my bedroom window," Schultz said.

At day's end, the fire appeared to be heading down the Snowmass Creek valley away from the Eisner residence and a few other neighboring homes, Schultz said. But Carroll said as he watched the flames lick at the sides of Eagle Mountain that he feared the fire would reach the high alpine meadows in the federal lands that stretch all the way to Mt. Sopris.

"Once you turn this corner, it's all prairie grass and meadow where the elk are hanging out," Carroll said. "It's really, really dry up there. There's so much dead wood and brush, the elk are even having trouble making their trails."

While it appeared that few people were forced to evacuate the area, the number of livestock that had to be moved was substantial, Sheriff Braudis noted.

"We have coordinated a volunteer effort to move animals via private trailers and pasture them in places that are safe from the fire," he said.

Landowner Connie Harvey said she spent much of the day moving horses and cattle from the ranch she owns along Snowmass Creek to another family property along Maroon Creek.

"They were concerned about the wind, so we've been up there getting our horses in their trailers. ... Luckily I have a place I can put them," Harvey said.

Harvey has also given permission for crews to use water from the ponds on her property to aid firefighting efforts.

"They're hoping that tomorrow it will be possible to fly with helicopters or planes and dip water out of those ponds and dump it on the fire," she said.

Although a helicopter was assigned to fight the fire, high winds prevented its deployment, county officials said. Officials were hopeful conditions will permit the use of air support today, and they said a federal firefighting crew may also be available to assist at first light.

While the Snowmass Creek fire may have been the most pressing public safety issue of the day, it wasn't the only wildfire incident in the Roaring Fork Valley on Thursday.

[http://www.aspendailynews.com/Search Articles/view search article.cfm?OrderNumber...](http://www.aspendailynews.com/Search%20Articles/view%20search%20article.cfm?OrderNumber...) 11/10/2003

At 1 a.m. the Carbondale fire department responded to a brush fire between two housing subdivisions in the West Bank area, squashing the 3/4-acre blaze just before it spread into a heavily wooded hillside - a turn that could have led to disaster, according to Deputy Fire Chief Rob Goodwin.

"We were able to get in there and knock it down pretty quickly, and then it took us a couple of hours to get it put out," Goodwin said. "It was in some sage brush, and had it gone into that piñon and juniper, it would have definitely made a run up to those homes. So it was an excellent stop."

No structures were damaged in the Carbondale fire, nor was anyone injured. The cause of that fire is still under investigation.

Monday, November 10, 2003

---

# Aspen Daily News

*"If you don't want it printed, don't let it happen."*

517 E. HOPKINS \* ASPEN, COLORADO 81611 \* PHONE: (970)925-2220

---

10/30/03

## **Smoke from California chokes Aspen valley**

By Troy Hooper/Aspen Daily News Staff Writer

It was an eerie awakening Thursday for Roaring Fork Valley residents who found a thick veil of smoke covering the morning sky.

Although fires were burning along Colorado's Front Range and later in Old Snowmass, the hazy conditions here resulted from firestorms raging in Southern California, according to a report from the National Weather Service office in Grand Junction.

The report - entitled "What's up with the smoke?" - explained that on Wednesday "a ridge of warm high pressure that dominated much of the (West) began to give way to a large, cooler trough of low pressure dropping south from Canada. ... With this trough came a strong jet stream (and) as the trough moved farther into the southwestern part of the country, strong winds aloft and an increased westerly flow began to drive the California wildfire smoke (to the east).

"Smoke began to filter into the Great Basin (in Nevada) on Wednesday, and by Thursday morning, it had moved into eastern Utah and western Colorado. Residents woke to a murky sky and a red, ominous sunrise," the report stated.

While the dark haze hid much of the valley's usual crisp fall colors, it also interfered with residents' routines.

"I could taste the smoke in my mouth," said one Aspen resident who had to cut her daily morning jog along Rio Grande Trail short. The resident, who recently recovered from a bad bout with bronchitis, said she stopped running after the air quality forced her into a fit of coughing like she hadn't experienced in days.

Two other residents in perfectly good health reported that they opted not go on a bike ride that morning because of the charcoal-colored conditions.

Although the skies changed from gray back to blue as the day wore on, weather watchers warn that there could be more smoke to come.

"The trough will move very slowly eastward over the next several days, so this area will remain under a west-to-southwest wind flow for a while. Many of the California fires are expected to burn for some time, so hazy conditions can be expected here throughout the weekend and into next week," said the Grand Junction-based National Weather Service report.

Monday, November 10, 2003

# Aspen Daily News

*"If you don't want it printed, don't let it happen."*

517 E. HOPKINS \* ASPEN, COLORADO 81611 \* PHONE: (970)925-2220

10/31/03

## **The worst is over at Snowmass Creek fire**

By Adam Preskill/Aspen Daily News Staff Writer

The Snowmass Creek fire was 50 percent contained at sundown Friday, with firefighters hoping that impending precipitation would help smother the blaze for good.

Investigators have confirmed that fallen power lines triggered the fire, which began sometime before noon Thursday on a remote portion of a ranch owned by Disney Co. CEO Michael Eisner.

The fire continued to build throughout the day and overnight, ultimately chewing up 51 acres of wooded hillside along Snowmass Creek Road. But by midday Friday the blaze had been cut down considerably through the efforts of the 80 fire personnel on the scene, and as night fell little was left beyond a few smoldering patches beneath a ridgeline on Eagle Mountain.

"The fire's really not spreading significantly – it's kind of just laid down," said Joe Disalvo, public information officer for the Pitkin County Sheriff's Office.

Federal fire crews reached the scene early in the day and took over command of the fire, which is now primarily limited to federal property under the jurisdiction of the Bureau of Land Management.

"They have better resources to handle a situation like this than we do locally," Disalvo said.

Firefighters from around the Roaring Fork Valley were called to the scene yesterday, including personnel from Snowmass Village, Aspen, Carbondale and Basalt fire districts.

Fire crews spent the day fighting the wildfire on foot, digging trenches and using hoses to cut off fuel sources for the blaze, Disalvo said. With rain and snow in the weather forecast for today, there's a chance that the toughest part of the job is over, he noted.

"Tonight we're going to take them out of the field, rest them up, and see what the situation needs for tomorrow. If it's snowing or raining, we'll be able to reduce our numbers," Disalvo said.

Although helicopters were available to provide air support both Thursday and Friday, heavy winds prevented any such measures from being used.

No major structures burned in the Snowmass Creek fire, although one small, uninhabited outbuilding was consumed. There was no danger to any structures in the area at nightfall, Disalvo.

While residents within a one-mile radius of the fire were encouraged by the sheriff's department

[http://www.aspendailynews.com/Search\\_Articles/view\\_search\\_article.cfm?OrderNumber...](http://www.aspendailynews.com/Search_Articles/view_search_article.cfm?OrderNumber...) 11/10/2003

to evacuate, homeowners have now been allowed to return, although the road remains closed to the public at both ends of the fire. Electrical power has also been restored to most of the homes in the area, Disalvo said, although some sporadic outages have occurred.

817 E. HOPKINS • ASPEN, COLORADO 81611 • PHONE: (970) 828-3228





## Online Archives from the Montrose Daily Press

**October 30, 2003**

Haze from California fires move into valley

Scott Schwebke

MONTROSE - Smoke from devastating wildfires in California may cause hazy conditions for the next several days throughout the Uncompahgre Valley.

A strong, upper level trough centered over the Pacific Northwest has drifted south, causing strong southwesterly winds to push thick smoke from the Southern California fires into Colorado, said Jim Daniels, a meteorologist for the National Weather Service in Grand Junction.

The Uncompahgre Valley was buffeted by high winds Wednesday night, and early this morning the National Weather Service clocked wind speeds at 45-55 mph over west-central Colorado.

Haze from the California fires could be seen this morning from Avon to the Four Corners area and may continue through Saturday, Daniels said.

The fires have destroyed more than 2,600 homes and blackened more than 660,000 acres - about 1,030 square miles, or roughly the size of Rhode Island. Twenty people have been killed, including one firefighter.

Nine members of the Montrose Interagency Fire Management Unit have been sent to Southern California to provide dispatch assistance and other help, said Steve Ellis, the unit's fire management officer.

The Associated Press contributed to this report.

Contact Scott Schwebke via e-mail at [scotts@montrosepress.com](mailto:scotts@montrosepress.com).

\* Note: only the past **14** days of articles will be searched, use the advanced search to find older documents

Enter search word(s):

- Diversify La Plata County, Colorado
- Expand offering Old West Values
- Relocate New West Economy



**SWCOLORADOHOME.COM**  
 Real Estate Listings / Area Broker List / Area Info / Maps / Gardening / Food

The Durango **Herald** **News**  
 Navigate Site

Email this article to a friend

October 31, 2003

## Smoke from California raises health concerns

By Dale Rodebaugh  
 Herald Staff Writer

Four Corners residents who imagined themselves in hazy Los Angeles on Thursday morning because of the smoky skies were partially right.



NANCY RICHMOND / Herald

Smoke fills the La Plata Mountains as seen from Hesperus Hill on Thursday. Smoke from the fires burning in Southern California reached Southwest Colorado on Wednesday evening. On Thursday, the Colorado Department of Public Health and Environment's air-quality advisory for the Southwest Colorado warned the air could be unhealthy for the elderly, those with respiratory ailments or others with health problems.

California forest-fire smoke is here, and it led the Colorado Department of Public Health to issue warnings in its air-quality advisory for Thursday for Southwest Colorado.

An air-quality expert from the San Juan Basin Health Department said the air was so poor Thursday it could be unhealthy especially for at-risk groups such as the elderly and those suffering from respiratory ailments.

The Durango Interagency Fire Dispatch Center said prevailing winds from the west are propelling smoke from nine wildfires in California and a wildland-use fire on the north rim of the Grand Canyon into the Four Corners.



A wildland-use fire is a fire set and controlled by foresters to reduce accumulated ground fuel in the woods.

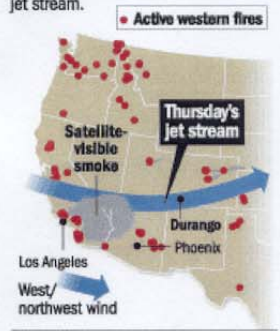
While smoke-streaked skies in the Four Corners are less than appealing, it could be worse, according to a La Plata County air-quality expert.

"Air quality is not nearly as poor as during the Missionary Ridge Fire two summers ago," said Nathan Ballenger, air-quality specialist with the San Juan Basin Health Department. "But at-risk people should stay indoors, keep windows and doors closed and do no heavy exercise."

Ballenger said the at-risk list includes the elderly, children 7 years old or younger and people with pre-existing respiratory problems such as asthma, emphysema, cardiovascular disease or infectious diseases such as colds or the flu.

### Wildfire smoke traveling east

Particles of smoke and ash from the California wildfires are at unhealthy levels in many areas including Los Angeles, San Bernardino and San Diego. The fires have given off an estimated 133,000 tons of these particles. Now, they are being transported along a broad jet stream.



SOURCE: Accuweather; EPA; NOAA AP

"Even people considered healthy might experience symptoms," Ballenger said. "Symptoms could include eye, nose, mouth and throat irritation, coughing, trouble breathing or tightness of chest."

The Colorado Department of Public Health and Environment's Web site reported Thursday afternoon that air quality in Southwest Colorado could be moderate to unhealthy into Thursday evening.

Lynn Westberg, director of the San Juan Basin Health Department, said filters that capture particulates in the air are sent to Denver every few days for analysis. Westberg said there was no way to tell Thursday evening if air quality would be a problem today.

Although Thursday's air-quality was poor, Mercy Medical Center's emergency room didn't see anyone for smoke-related complaints on Thursday, said spokesman David Bruzzese.

"I don't know if people went to their primary-care physicians, but the emergency room didn't see anyone," he said.

According to the National Interagency Fire Center, 11 wildfires in California (nine of them in Southern California) had burned 730,000 acres and thousands of people remain evacuated. Nearly 13,000 firefighters and support personnel are battling the blazes.

So far this year, 55,914 wildfires have consumed 3.5 million acres across the country. Last year, 88,458 fires burned 6.9 million acres in the United States. The cost of fire suppression last year was \$1.6 billion.

Reach Staff Writer Dale Rodebaugh at [daler@durangoherald.com](mailto:daler@durangoherald.com).

[Web Durango](#) | [Cortez Journal](#) | [Inside Outside](#) | [Southwest Colorado Home](#) | [Herald Store](#)

## **5.0 Laboratory Data**

Laboratory data includes filter weights and reweighs as well as continuous data showing the elevation and subsequent drop-off of  $PM_{10}$  values for Grand Junction before, during and after the event.

SAMPLE RECORD SHEET  
SIERRA 1200 PM10 SAMPLER - PINK

(City or Town) (Sampler Location)

NOV 04 2003

Sample Date: 10-30, 2003

Filter No.: 10

3031452

Sampler Motor #: 4180

Reweighed 4.5934

			LABORATORY USE ONLY		
Manometer Reading	Elapsed Time Meter Reading	Unusual conditions near the	M <sup>3</sup> (STP)		063
Before Sampling: 2.80	After Sampling: 436199	Sampling site, or on the day of	Gross Wt. (g)	4. 5934	
After Sampling: 2.95	Before Sampling: 46745	Sampling: smoke from CA, Co.	Tare Wt. (g)	4. 2889	
	Net: 1454	In area along with dust & rain	Net Wt. (g)		
			µg/m <sup>3</sup> (STP)	234	95
			µg/m <sup>3</sup> (LTP)		

Operator's Name: Larry Hudnall

NOV 06 2003

COLORADO DEPT. OF PUBLIC HEALTH & ENVIRONMENT  
Colorado Air Sampling Network

Site:

(City or Town) (Sampler Location)

MOUNT CRESTED BUTTE # 2

SAMPLE RECORD SHEET  
SIERRA 1200 PM10 SAMPLER - PINK

Reweighed 4.4784 NOV 06 2003

Sample Date: 10-30, 2003

Filter No.: 10

Q3031680

Sampler Motor #: 8856

			LABORATORY USE ONLY		
Manometer Reading	Elapsed Time Meter Reading	Unusual conditions near the	M <sup>3</sup> (STP)		063
Before Sampling: 2.8	After Sampling: 66530	Sampling site, or on the day of	Gross Wt. (g)	4. 4784	
After Sampling: 2.8	Before Sampling: 65089	Sampling:	Tare Wt. (g)	4. 2607	
	Net: 1441		Net Wt. (g)		
			µg/m <sup>3</sup> (STP)	167	98
			µg/m <sup>3</sup> (LTP)		

Operator's Name: MARTIN NOV 07 2003

fallout smoke in the area from California fires

COLORADO DEPT. OF PUBLIC HEALTH & ENVIRONMENT  
Colorado Air Sampling Network

Site:

(City or Town) (Sampler Location)

CRESTED BUTTE # 1

SAMPLE RECORD SHEET  
SIERRA 1200 PM10 SAMPLER - PINK

Reweighed 4.5370 NOV 06 2003

Sample Date: 10-30, 2003

Filter No.: 10

Q3031268

Sampler Motor #: 5035

			LABORATORY USE ONLY		
Manometer Reading	Elapsed Time Meter Reading	Unusual conditions near the	M <sup>3</sup> (STP)		043
Before Sampling: 3.1	After Sampling: 43828	Sampling site, or on the day of	Gross Wt. (g)	4. 5370	
After Sampling: 3.1	Before Sampling: 42400	Sampling:	Tare Wt. (g)	4. 3007	
	Net: 1428		Net Wt. (g)		
			µg/m <sup>3</sup> (STP)	182	72
			µg/m <sup>3</sup> (LTP)		

Operator's Name: MARTIN

NOV 07 2003 fallout smoke in the area from California fires

COLORADO DEPT. OF PUBLIC HEALTH & ENVIRONMENT  
 Colorado Air Sampling Network

Site: Durango PCH # 2  
 (City or Town) (Sampler Location)

OCT 3 0 2003

SAMPLE RECORD SHEET  
 SIERRA 1200 PM10 SAMPLER - PINK

Sample Date: 10-21, 2004 Filler No.: 0 3031784 Sampler Motor #: \_\_\_\_\_

Manometer Reading		Elapsed Time Meter Reading		Unusual conditions near the Sampling site, or on the day of Sampling:	
Before Sampling:	<u>3.1</u>	After Sampling:	<u>96534</u>	Gross Wt. (g)	<u>4.3060</u>
After Sampling:	<u>3.2</u>	Before Sampling:	<u>95465</u>	Tare Wt. (g)	<u>4.2632</u>
Net:	<u>1435</u>	Net:	<u>1435</u>	Net Wt. (g)	<u>33.02</u>
				µg/m <sup>3</sup> (STP)	<u>33.02</u>
				µg/m <sup>3</sup> (LTP)	

Operator's Name: THOMAS BAILEY OCT 3 1 2003

COLORADO DEPT. OF PUBLIC HEALTH & ENVIRONMENT  
 Colorado Air Sampling Network

Site: Stapleton Air Station Annex # 1  
 (City or Town) (Sampler Location)

NOV 0 4 2003

SAMPLE RECORD SHEET  
 SIERRA 1200 PM10 SAMPLER - PINK

Sample Date: 10/29, 2003 Filler No.: 10 03032705 Sampler Motor #: 1207D

Manometer Reading		Elapsed Time Meter Reading		Unusual conditions near the Sampling site, or on the day of Sampling:	
Before Sampling:	<u>3.00</u>	After Sampling:	<u>52171</u>	Gross Wt. (g)	<u>4.3436</u>
After Sampling:	<u>3.00</u>	Before Sampling:	<u>50734</u>	Tare Wt. (g)	<u>4.3073</u>
Net:	<u>1437</u>	Net:	<u>1437</u>	Net Wt. (g)	<u>31.40</u>
				µg/m <sup>3</sup> (STP)	<u>31.40</u>
				µg/m <sup>3</sup> (LTP)	

Operator's Name: 2075 NOV 0 6 2003

COLORADO DEPT. OF PUBLIC HEALTH & ENVIRONMENT  
Colorado Air Sampling Network

SAMPLE RECORD SHEET  
SIERRA 1200 PM10 SAMPLER - PINK

Site: **Grand Junction - MCHD** # Powell 1

(City or Town) (Sampler Location)

NOV 10 2003

Remersford 4.5743

Sample Date: 10/30, 2003 Filter No.: 3026514

Manometer Reading Elapsed Time Meter Reading  
After Sampling: 75272  
Before Sampling: 73840  
Net: 1432

Sampler Motor #: 11975

Unusual conditions near the Sampling site, or on the day of Sampling: High Wind  
Sweat - Blowing Dust  
Smoke from

California's Wildfires.

LABORATORY USE ONLY	
M <sup>3</sup> (STP)	<u>063</u>
Gross Wt. (g)	<u>4.5744</u>
Tare Wt. (g)	<u>4.2381</u>
Net Wt. (g)	
µg/m <sup>3</sup> (STP)	<u>259</u>
µg/m <sup>3</sup> (LTP)	<u>49</u>

NOV 11 2003

Operator's Name: Perry Buda

R-4.5744

**From:** Jeffery Brown  
**To:** PM10  
**Date:** 11/6/03 3:46PM  
**Subject:** High Gwt.

Delta site filter # 3031452 sample date 10/30/03 came to the lab on 11/04/03 Gwt. 4.5934  
reweighed filter Gwt. 4.5934 Stp was 234.95

**From:** Jeffery Brown  
**To:** PM10  
**Date:** 11/7/03 12:24PM  
**Subject:** High Gwt.

Crested Butte site #1 filter# Q 3031268 sample date 10/30/03 arrived 11/06/03 Gwt 4.5370  
reweighed filter 4.5370 Stp was 182.72, Mt. Crested Butte site#2 filter# Q3031680 sample date  
10/30/03 arrived 11/06/03 Gwt. 4.4784 reweighed filter.4784 Stp was 167.98.

**From:** Jeffery Brown  
**To:** PM10  
**Date:** 11/11/03 4:37PM  
**Subject:** High Gwt.

Grand Junction Powell site #1 filter #Q3036514 sample date 10/30/03 filter arrived 11/10/03  
Gwt. was 4.5744 reweighed filter Gwt. 4.5743 Stp was 259.49

*R 4,5744*



		11-7-03
Crested Butte	10/30/03	Rewind 4.5340
Mt Crested Butte	10/30/03	4.4764
Dulla	10/30	4.5920

24-HOUR REPORT

FOR: 10/29/ 3

DCN: 18 - GRANDJCT

HOUR	CO PPM	+ PM10 UG/M3	+ RS MPH	+ RD DEG	+ SIGMA	+ TEMP DEGF	+ WS MPH	+ WD DEG	+ ITEMP DEGF	+ RHUM %	+ +	+ +	+ +	+ +
00	.6C	43.0	3.0	303.	31.0	45.0	3.0	305.	63.7	51.0				
01	.6	40.0	0.0	239.	50.0	41.0	1.0	235.	62.7	57.0				
02	.7	45.0	1.0	72.0	41.0	40.0	1.0	67.0	61.4	63.0				
03	.6	45.0	2.0	72.0	39.0	41.0	2.0	72.0	60.3	61.0				
04	.6	42.0	1.0	283.	70.0	40.0	2.0	283.	59.5	62.0				
05	.6	39.0	2.0	74.0	33.0	41.0	3.0	83.0	58.8	61.0				
06	1.3	37.0	4.0	286.	23.0	40.0	4.0	288.	58.2	65.0				
07	1.9	36.0	4.0	300.	31.0	39.0	4.0	306.	57.7	64.0				
08	1.5	37.0	2.0	272.	40.0	47.0	3.0	272.	58.5	52.0				
09	1.3	34.0	5.0	280.	22.0	53.0	6.0	282.	60.9	42.0				
10	1.1	28.0	6.0	289.	21.0	57.0	7.0	291.	63.2	38.0				
11	1.5	23.0	6.0	292.	21.0	63.0	6.0	293.	65.2	33.0				
12	1.5	10.0	5.0	276.	30.0	68.0	5.0	277.	67.5	27.0				
13	1.2	13.0	5.0	293.	24.0	72.0	6.0	298.	67.4	26.0				
14	1.3	15.0	4.0	295.	45.0	74.0	5.0	299.	67.2	23.0				
15	.7	15.0	1.0	115.	45.0	75.0	4.0	119.	67.2	22.0				
16	.6	32.0	5.0	181.	52.0	75.0	6.0	179.	67.1	20.0				
17	.4	76.0	8.0	195.	25.0	74.0	9.0	195.	67.0	18.0				
18	.3	74.0	9.0	193.	22.0	73.0	10.0	194.	67.1	18.0				
19	.2	125.	12.0	198.	22.0	73.0	12.0	197.	67.0	17.0				
20	.2	119.	10.0	206.	23.0	72.0	11.0	204.	67.0	17.0				
21	.4	108.	7.0	221.	30.0	71.0	7.0	222.	66.9	17.0				
22	1.0	105.	1.0	238.	57.0	68.0	3.0	312.	67.2	17.0				
23	.7C	132.	4.0	134.	36.0	65.0	5.0	132.	67.0	19.0				

STATUS CODES 'P' - POWER DOWN, 'D' - DISABLED, 'B' - BAD STATUS, 'C' - CALIBRATION, '-' - MINIMUM, '+' - MAXIMUM,  
'R' - RATE OF CHANGE, 'E' - FIELD EXCEEDED, 'N' - DATA NOT FOUND, ' ' - NO ERROR

24-HOUR REPORT

FOR: 10/30/ 3

DCN: 18 - GRANDJCT

HOUR	CO PPM	+ PM10 UG/M3	+ RS MPH	+ RD DEG	+ SIGMA	+ TEMP DEGF	+ WS MPH	+ WD DEG	+ ITEMP DEGF	+ RHUM %					
00	.7C	175.	9.0	138.	16.0	65.0	9.0	139.	67.1	19.0					
01	.4	175.	14.0	137.	14.0	64.0	14.0	137.	67.1	18.0					
02	.3	169.	12.0	146.	22.0	63.0	13.0	149.	67.5	19.0					
03	.4	158.	3.0	163.	75.0	61.0	5.0	171.	67.0	20.0					
04	.4	136.	5.0	172.	53.0	62.0	6.0	176.	67.1	20.0					
05	.4	134.	7.0	148.	46.0	60.0	8.0	146.	67.4	23.0					
06	.3	118.	12.0	143.	13.0	59.0	12.0	142.	67.4	25.0					
07	.4	97.0	10.0	134.	15.0	59.0	11.0	134.	67.5	27.0					
08	.3	83.0	10.0	145.	17.0	62.0	10.0	145.	67.2	26.0					
09	.3	89.0	11.0	177.	23.0	64.0	12.0	178.	67.4	21.0					
10	.3	87.0	12.0	190.	25.0	66.0	13.0	190.	67.4	19.0					
11	.3	86.0	9.0	203.	25.0	68.0	10.0	202.	67.3	17.0					
12	.4	115.	11.0	202.	27.0	69.0	12.0	200.	67.1	17.0					
13	.4	142.	10.0	195.	26.0	70.0	11.0	195.	67.1	17.0					
14	.3	190.	10.0	193.	26.0	70.0	11.0	192.	67.1	18.0					
15	.5	250.+	10.0	201.	23.0	71.0	11.0	200.	67.1	17.0					
16	.6	-999.+	7.0	199.	23.0	71.0	8.0	198.	67.0	15.0					
17	.7	233.	6.0	213.	21.0	70.0	6.0	211.	67.0	15.0					
18	1.3	181.	4.0	240.	25.0	67.0	4.0	240.	67.0	16.0					
19	.6	109.	6.0	246.	22.0	67.0	7.0	242.	67.0	16.0					
20	.6	96.0	11.0	297.	16.0	59.0	12.0	297.	67.3	26.0					
21	.9	61.0	7.0	306.	22.0	56.0	8.0	309.	67.3	28.0					
22	.6	47.0	1.0	196.	41.0	52.0	4.0	215.	67.6	31.0					
23	.3C	47.0	4.0	161.	29.0	48.0	5.0	167.	66.9	35.0					

STATUS CODES 'P' - POWER DOWN, 'D' - DISABLED, 'B' - BAD STATUS, 'C' - CALIBRATION, '-' - MINIMUM, '+' - MAXIMUM,  
 'R' - RATE OF CHANGE, 'E' - FIELD EXCEEDED, 'N' - DATA NOT FOUND, ' ' - NO ERROR

went off-scale.

- set at MAX = 500.

24-hr. avg. = 145  $\mu\text{g}/\text{m}^3$  if 500 used for missing value

24-HOUR REPORT

FOR: 10/31/ 3

DCN: 18 - GRANDJCT

HOURL	CO	+ PM10	+ RS	+ RD	+ SIGMA	+ TEMP	+ WS	+ WD	+ ITEMP	+ RHUM				
	PPM	UG/M3	MPH	DEG		DEGF	MPH	DEG	DEGF	%				
00	.2C	47.0	5.0	136.	23.0	47.0	6.0	135.	66.2	37.0				
01	.2	40.0	4.0	156.	18.0	46.0	4.0	159.	65.4	37.0				
02	.2	29.0	4.0	174.	15.0	45.0	4.0	176.	64.7	40.0				
03	.2	23.0	4.0	171.	13.0	44.0	4.0	172.	63.9	42.0				
04	.2	23.0	5.0	164.	12.0	44.0	5.0	166.	63.2	44.0				
05	.2	23.0	3.0	171.	18.0	42.0	3.0	173.	62.4	45.0				
06	.3	26.0	3.0	166.	12.0	41.0	3.0	167.	61.3	48.0				
07	.5	36.0	2.0	152.	20.0	41.0	2.0	153.	60.3	49.0				
08	.4	43.0	3.0	131.	20.0	44.0	3.0	132.	60.4	46.0				
09	.6	43.0	3.0	127.	27.0	48.0	4.0	126.	61.7	41.0				
10	.5	38.0	3.0	91.0	43.0	54.0	4.0	85.0	63.2	36.0				
11	.5	43.0	8.0	191.	45.0	63.0	9.0	191.	65.1	26.0				
12	.5	41.0	10.0	200.	26.0	65.0	11.0	200.	67.1	20.0				
13	.5	48.0	11.0	201.	24.0	66.0	12.0	200.	67.5	17.0				
14	.4	52.0	11.0	208.	23.0	67.0	12.0	206.	67.3	17.0				
15	.5	53.0	9.0	207.	26.0	67.0	10.0	206.	67.2	17.0				
16	.6	61.0	9.0	204.	23.0	66.0	10.0	202.	67.2	19.0				
17	.6	61.0	7.0	200.	23.0	66.0	8.0	199.	67.2	19.0				
18	.5	64.0	9.0	206.	24.0	67.0	10.0	204.	67.4	18.0				
19	.3	95.0	9.0	205.	25.0	66.0	10.0	204.	67.3	19.0				
20	.4	127.	11.0	213.	25.0	65.0	12.0	211.	67.4	21.0				
21	.5	127.	10.0	209.	23.0	64.0	11.0	208.	67.3	22.0				
22	.3	101.	11.0	212.	22.0	63.0	12.0	209.	67.4	24.0				
23	.2C	76.0	9.0	210.	21.0	62.0	9.0	208.	67.3	27.0				

STATUS CODES `P` - POWER DOWN, `D` - DISABLED, `B` - BAD STATUS, `C` - CALIBRATION, `-` - MINIMUM, `+` - MAXIMUM,  
`R` - RATE OF CHANGE, `E` - FIELD EXCEEDED, `N` - DATA NOT FOUND, ` ` - NO ERROR

## **6.0 Reference**

Colorado Department of Public Health and Environment, City of Lamar, Prowers County Commissioners, *Natural Events Action Plan for High Wind Events – Lamar, Colorado*, April 1998.

**Attachment A**  
**Colorado Surface Weather Observations for**  
**October 30, 2003, 6 AM to 8 PM MST**  
**Reported by the National Weather Service**

ASUS45 KBOU 301306  
SWRCO

COLORADO STATE WEATHER ROUNDUP  
NATIONAL WEATHER SERVICE DENVER CO  
600 AM MST THU OCT 30 2003

NOTE: "FAIR" INDICATES FEW OR NO CLOUDS BELOW 12000 FEET WITH NO  
SIGNIFICANT WEATHER AND/OR OBSTRUCTIONS TO VISIBILITY.

COZ001>005-013-030-031-301400-  
NORTHWEST COLORADO

CITY	SKY/WX	TMP	DP	RH	WIND	PRES	REMARKS
CRAIG	PTCLDY	24	22	91	CALM	29.63F	
HAYDEN	CLEAR	27	21	80	CALM	29.62F	
MEEKER	PTCLDY	25	18	74	CALM	29.59F	

\$\$

COZ006>008-011-301400-  
WEST CENTRAL VALLEYS

CITY	SKY/WX	TMP	DP	RH	WIND	PRES	REMARKS
GRAND JUNCTION	CLEAR	56	22	26	SE16	29.55R	
MONTROSE	CLEAR	54	21	27	W13	29.63F	HAZE
EAGLE	CLEAR	54	16	22	SW14G26	29.57S	
RIFLE	CLEAR	51	19	28	E7	29.55R	

\$\$

COZ017>023-064>068-301400-  
SOUTHWEST COLORADO

CITY	SKY/WX	TMP	DP	RH	WIND	PRES	REMARKS
DURANGO	PTCLDY	34	18	52	NE7	29.83R	WCI 28
CORTEZ	PTCLDY	39	22	50	NE7	29.75R	
WOLF CREEK PAS	FAIR	25	18	74	SW25G35	29.91F	WCI 9

\$\$

COZ009-010-012-014-032>034-037-058>063-301400-  
CENTRAL COLORADO

CITY	SKY/WX	TMP	DP	RH	WIND	PRES	REMARKS
ASPEN	PTCLDY	41	15	35	E7	29.64F	HAZE
COPPER MTN	FAIR	32	9	37	S17G28	29.79R	WCI 21
GUNNISON	CLEAR	30	10	43	CALM	29.71S	
KREMMLING	FAIR	50	21	32	SW18G26	29.59S	HAZE
LEADVILLE	PTCLDY	35	11	36	SE8	29.72F	HAZE WCI 29
MONARCH PASS	FAIR	28	12	50	SW28G33	29.93R	HAZE WCI 13

\$\$

COZ069>075-301400-  
SAN LUIS VALLEY/SANGRE DE CRISTO MOUNTAINS

CITY	SKY/WX	TMP	DP	RH	WIND	PRES	REMARKS
ALAMOSA	CLEAR	39	18	42	SE9	29.80F	
LA VETA PASS	MOCLDY	34	16	47	MISG	29.84S	

\$\$

COZ035-036-038>040-301400-  
NORTHERN COLORADO FRONT RANGE

CITY	SKY/WX	TMP	DP	RH	WIND	PRES	REMARKS
DENVER INTL AP	FRZ DRZL	28	27	93	N15	29.78R	VSF 1 WCI 17
AURORA	FRZ DRZL	30	30	100	N13G21	29.77R	FOG WCI 20
CENTENNIAL	LGT RAIN	32	31	96	N12	29.76R	FOG WCI 23
BROOMFIELD	N/A	28	28	100	N13	29.80	FOG WCI 18
LOVELAND	CLOUDY	27	18	69	N14	29.83R	WCI 15

\$\$

COZ041-046-047-076>085-087-088-301400-  
PIKES PEAK/PALMER DIVIDE AND SOUTHERN FOOTHILLS

CITY	SKY/WX	TMP	DP	RH	WIND	PRES	REMARKS
COLO. SPRINGS	MOCLDY	37	34	89	NE10	29.75R	
A. F. ACADEMY	MOCLDY	36	32	87	N14	29.71R	
FORT CARSON	NOT AVBL						
LIMON	CLOUDY	35	30	82	NE16	29.75R	WCI 25
MONUMENT HILL	MIX PCPN	27	N/A	N/A	NE7	29.73R	VSF 1/2 WCI 19
TRINIDAD	CLOUDY	37	31	78	NE7	29.78R	

\$\$

COZ042>045-048>051-090-091-301400-  
NORTHEAST COLORADO

CITY	SKY/WX	TMP	DP	RH	WIND	PRES	REMARKS
GREELEY ARPT	CLOUDY	27	25	93	N12	29.82R	WCI 16
AKRON	CLOUDY	31	26	82	N17	29.78R	WCI 19
BURLINGTON	MOCLDY	36	31	82	N16G23	29.73S	

\$\$

COZ086-089-092>099-301400-  
SOUTHEAST COLORADO

CITY	SKY/WX	TMP	DP	RH	WIND	PRES	REMARKS
PUEBLO	CLOUDY	42	33	70	NE3	29.76R	
LA JUNTA	CLEAR	38	26	62	NE8	29.76R	
LAMAR	CLEAR	38	28	67	N12	29.75R	
SPRINGFIELD	N/A	38	29	70	NW17	29.67R	

ASUS45 KBOU 301406  
SWRCO

COLORADO STATE WEATHER ROUNDUP  
NATIONAL WEATHER SERVICE DENVER CO  
700 AM MST THU OCT 30 2003

NOTE: "FAIR" INDICATES FEW OR NO CLOUDS BELOW 12000 FEET WITH NO  
SIGNIFICANT WEATHER AND/OR OBSTRUCTIONS TO VISIBILITY.

COZ001>005-013-030-031-301500-  
NORTHWEST COLORADO

CITY	SKY/WX	TMP	DP	RH	WIND	PRES	REMARKS
CRAIG	PTCLDY	22	20	92	SW3	29.64R	



HAYDEN	CLEAR	25	19	80	SW6	29.63R	WCI	18
MEEKER	PTCLDY	24	19	81	CALM	29.59S		

\$\$

COZ006>008-011-301500-  
WEST CENTRAL VALLEYS

CITY	SKY/WX	TMP	DP	RH	WIND	PRES	REMARKS
GRAND JUNCTION	CLEAR	57	24	28	S17	29.55S	
MONTROSE	CLEAR	56	21	25	SW9G18	29.62F	HAZE
EAGLE	NOT AVBL						
RIFLE	CLEAR	53	20	27	SE9	29.56R	HAZE

\$\$

COZ017>023-064>068-301500-  
SOUTHWEST COLORADO

CITY	SKY/WX	TMP	DP	RH	WIND	PRES	REMARKS
DURANGO	CLEAR	35	17	47	N6	29.84R	HAZE WCI 30
CORTEZ	CLEAR	45	21	38	S8	29.76R	
WOLF CREEK PAS	FAIR	25	19	80	SW28G37	29.91S	WCI 8

\$\$

COZ009-010-012-014-032>034-037-058>063-301500-  
CENTRAL COLORADO

CITY	SKY/WX	TMP	DP	RH	WIND	PRES	REMARKS
ASPEN	PTCLDY	42	14	32	S5	29.65R	HAZE
COPPER MTN	FAIR	30	10	43	S26	29.78S	WCI 16
GUNNISON	CLEAR	28	9	43	NE6	29.72R	WCI 22
KREMMLING	FAIR	50	21	32	SW15G25	29.59S	HAZE
LEADVILLE	CLEAR	34	14	43	SE6	29.73R	HAZE WCI 29
MONARCH PASS	FAIR	27	12	54	S30	29.93S	HAZE WCI 10

\$\$

COZ069>075-301500-  
SAN LUIS VALLEY/SANGRE DE CRISTO MOUNTAINS

CITY	SKY/WX	TMP	DP	RH	WIND	PRES	REMARKS
ALAMOSA	CLEAR	40	18	41	S15	29.82R	
LA VETA PASS	FAIR	32	16	51	MISG	29.84F	

\$\$

COZ035-036-038>040-301500-  
NORTHERN COLORADO FRONT RANGE

CITY	SKY/WX	TMP	DP	RH	WIND	PRES	REMARKS
DENVER INTL AP	FRZ DRZL	26	25	96	N14	29.81R	VSB 1/2 WCI 14
AURORA	FRZ DRZL	28	27	93	N10G20	29.80R	FOG WCI 19
CENTENNIAL	FRZ DRZL	28	27	96	NE10	29.79R	VSB 1 WCI 19
BROOMFIELD	FOG	28	28	100	N9	29.82R	VSB 3/4 WCI 20
LOVELAND	CLOUDY	25	18	74	N9	29.86R	WCI 15

\$\$

COZ041-046-047-076>085-087-088-301500-  
PIKES PEAK/PALMER DIVIDE AND SOUTHERN FOOTHILLS

CITY	SKY/WX	TMP	DP	RH	WIND	PRES	REMARKS
COLO. SPRINGS	CLOUDY	38	35	89	NE3	29.77R	
A. F. ACADEMY	CLOUDY	36	32	87	N12	29.74R	
FORT CARSON	NOT AVBL						
LIMON	CLOUDY	35	29	78	NE16	29.77R	WCI 25
MONUMENT HILL	FOG	27	N/A	N/A	NE7	29.75R	VSB 1 WCI 19
TRINIDAD	CLOUDY	36	31	82	NE5	29.80R	

\$\$

COZ042>045-048>051-090-091-301500-  
NORTHEAST COLORADO

CITY	SKY/WX	TMP	DP	RH	WIND	PRES	REMARKS
GREELEY ARPT	CLOUDY	27	25	93	N8	29.85R	WCI 18
AKRON	CLOUDY	30	24	78	N13	29.83R	WCI 20
BURLINGTON	CLOUDY	37	30	75	N17G28	29.75R	

\$\$

COZ086-089-092>099-301500-  
SOUTHEAST COLORADO

CITY	SKY/WX	TMP	DP	RH	WIND	PRES	REMARKS
PUEBLO	CLOUDY	42	34	73	SE5	29.78R	
LA JUNTA	CLEAR	37	27	67	NE12	29.79R	
LAMAR	PTCLDY	37	29	72	N9	29.80R	
SPRINGFIELD	N/A	37	27	67	N15G22	29.73R	

ASUS45 KBOU 301506  
SWRCO

COLORADO STATE WEATHER ROUNDUP  
NATIONAL WEATHER SERVICE DENVER CO  
800 AM MST THU OCT 30 2003

NOTE: "FAIR" INDICATES FEW OR NO CLOUDS BELOW 12000 FEET WITH NO  
SIGNIFICANT WEATHER AND/OR OBSTRUCTIONS TO VISIBILITY.

COZ001>005-013-030-031-301600-  
NORTHWEST COLORADO

CITY	SKY/WX	TMP	DP	RH	WIND	PRES	REMARKS
CRAIG	MOSUNNY	26	24	92	CALM	29.65R	
HAYDEN	MOSUNNY	27	21	80	CALM	29.63S	
MEEKER	MOSUNNY	26	21	81	CALM	29.59S	

\$\$

COZ006>008-011-301600-  
WEST CENTRAL VALLEYS

CITY	SKY/WX	TMP	DP	RH	WIND	PRES	REMARKS
GRAND JUNCTION	MOSUNNY	58	26	29	SE15	29.56R	
MONTROSE	SUNNY	60	20	21	S24G39	29.63R	HAZE
EAGLE	NOT AVBL						
RIFLE	MOSUNNY	51	23	33	CALM	29.57R	HAZE

\$\$

COZ017>023-064>068-301600-

## SOUTHWEST COLORADO

CITY	SKY/WX	TMP	DP	RH	WIND	PRES	REMARKS
DURANGO	SUNNY	40	19	43	N6	29.87R	
CORTEZ	SUNNY	52	22	30	S13	29.78R	
WOLF CREEK PAS	FAIR	27	21	80	SW24G37	29.94R	WCI 12

\$\$

COZ009-010-012-014-032>034-037-058>063-301600-  
CENTRAL COLORADO

CITY	SKY/WX	TMP	DP	RH	WIND	PRES	REMARKS
ASPEN	MOSUNNY	41	15	35	CALM	29.66R	SMOKE
COPPER MTN	FAIR	34	12	40	S15G25	29.81R	WCI 24
GUNNISON	SUNNY	30	9	40	N8	29.74R	WCI 23
KREMMLING	FAIR	50	21	32	SW16	29.62R	HAZE
LEADVILLE	SUNNY	37	13	37	SE5	29.75R	HAZE
MONARCH PASS	FAIR	28	10	47	S26G32	29.95R	HAZE WCI 13

\$\$

COZ069>075-301600-  
SAN LUIS VALLEY/SANGRE DE CRISTO MOUNTAINS

CITY	SKY/WX	TMP	DP	RH	WIND	PRES	REMARKS
ALAMOSA	SUNNY	46	21	37	S18	29.84R	
LA VETA PASS	FAIR	36	18	48	MISG	29.85R	

\$\$

COZ035-036-038>040-301600-  
NORTHERN COLORADO FRONT RANGE

CITY	SKY/WX	TMP	DP	RH	WIND	PRES	REMARKS
DENVER INTL AP	FRZ DRZL	25	25	100	N12	29.84R	VSB 1/2 WCI 14
AURORA	FRZ DRZL	27	27	100	N12	29.83R	FOG WCI 16
CENTENNIAL	FRZ DRZL	27	25	92	N10	29.81R	VSB 1 WCI 17
BROOMFIELD	FOG	27	27	100	NE12	29.85R	VSB 3/4 WCI 16
LOVELAND	CLOUDY	27	18	69	N10	29.87R	WCI 17

\$\$

COZ041-046-047-076>085-087-088-301600-  
PIKES PEAK/PALMER DIVIDE AND SOUTHERN FOOTHILLS

CITY	SKY/WX	TMP	DP	RH	WIND	PRES	REMARKS
COLO. SPRINGS	CLOUDY	36	34	92	NE8	29.80R	
A. F. ACADEMY	CLOUDY	34	30	86	VRB6	29.76R	WCI 29
FORT CARSON	CLOUDY	36	32	87	SE12	29.80R	
LIMON	CLOUDY	30	28	93	N16	29.81R	WCI 19
MONUMENT HILL	CLOUDY	27	N/A	N/A	NE5	29.78R	FOG WCI 21
TRINIDAD	CLOUDY	36	31	82	E6	29.82R	

\$\$

COZ042>045-048>051-090-091-301600-  
NORTHEAST COLORADO

CITY	SKY/WX	TMP	DP	RH	WIND	PRES	REMARKS
GREELEY ARPT	CLOUDY	28	23	80	N9	29.86R	WCI 20
AKRON	CLOUDY	29	23	78	N16	29.84R	WCI 17

BURLINGTON CLOUDY 36 29 75 N17 29.80R  
\$\$

COZ086-089-092>099-301600-  
SOUTHEAST COLORADO

CITY	SKY/WX	TMP	DP	RH	WIND	PRES	REMARKS
PUEBLO	CLOUDY	43	33	68	E9	29.82R	
LA JUNTA	CLOUDY	38	28	67	E3	29.82R	
LAMAR	SUNNY	39	30	70	N7	29.83R	
SPRINGFIELD	N/A	39	28	64	N17	29.78R	

ASUS45 KBOU 301606  
SWRCO

COLORADO STATE WEATHER ROUNDUP  
NATIONAL WEATHER SERVICE DENVER CO  
900 AM MST THU OCT 30 2003

NOTE: "FAIR" INDICATES FEW OR NO CLOUDS BELOW 12000 FEET WITH NO  
SIGNIFICANT WEATHER AND/OR OBSTRUCTIONS TO VISIBILITY.

COZ001>005-013-030-031-301700-  
NORTHWEST COLORADO

CITY	SKY/WX	TMP	DP	RH	WIND	PRES	REMARKS
CRAIG	PTSUNNY	30	25	81	CALM	29.63F	
HAYDEN	MOSUNNY	28	21	74	CALM	29.62F	
MEEKER	MOSUNNY	33	23	66	VRB3	29.59S	

\$\$

COZ006>008-011-301700-  
WEST CENTRAL VALLEYS

CITY	SKY/WX	TMP	DP	RH	WIND	PRES	REMARKS
GRAND JUNCTION	MOSUNNY	61	25	25	SE18G24	29.56S	
MONTROSE	SUNNY	61	21	21	S21G31	29.64R	
EAGLE	NOT AVBL						
RIFLE	SUNNY	59	24	26	S12	29.55F	

\$\$

COZ017>023-064>068-301700-  
SOUTHWEST COLORADO

CITY	SKY/WX	TMP	DP	RH	WIND	PRES	REMARKS
DURANGO	SUNNY	46	24	42	E7	29.89R	
CORTEZ	SUNNY	55	23	28	S12G21	29.79R	
WOLF CREEK PAS	PTSUNNY	28	21	74	SW30G43	29.95R	WCI 13

\$\$

COZ009-010-012-014-032>034-037-058>063-301700-  
CENTRAL COLORADO

CITY	SKY/WX	TMP	DP	RH	WIND	PRES	REMARKS
ASPEN	MOSUNNY	49	17	28	CALM	29.66S	SMOKE
COPPER MTN	FAIR	36	10	35	S21G29	29.81S	
GUNNISON	SUNNY	37	12	35	N9	29.74S	

KREMMLING	FAIR	54	23	30	SW16G23	29.61S	HAZE
LEADVILLE	SUNNY	39	14	36	S10G20	29.75S	HAZE
MONARCH PASS	FAIR	30	10	43	S31	29.96S	WCI 15

\$\$

COZ069>075-301700-  
SAN LUIS VALLEY/SANGRE DE CRISTO MOUNTAINS

CITY	SKY/WX	TMP	DP	RH	WIND	PRES	REMARKS
ALAMOSA	SUNNY	50	22	33	S18G28	29.84S	
LA VETA PASS	FAIR	37	18	44	MISG	29.86S	

\$\$

COZ035-036-038>040-301700-  
NORTHERN COLORADO FRONT RANGE

CITY	SKY/WX	TMP	DP	RH	WIND	PRES	REMARKS
DENVER INTL AP	FRZ DRZL	26	25	96	N8	29.85R	VSB 1/2 WCI 18
AURORA	FRZ DRZL	27	27	100	N10	29.84R	WCI 17
CENTENNIAL	FRZ DRZL	27	25	92	N10	29.83R	FOG WCI 17
LOVELAND	CLOUDY	25	18	74	N10	29.88F	WCI 15

\$\$

COZ041-046-047-076>085-087-088-301700-  
PIKES PEAK/PALMER DIVIDE AND SOUTHERN FOOTHILLS

CITY	SKY/WX	TMP	DP	RH	WIND	PRES	REMARKS
COLO. SPRINGS	CLOUDY	36	33	89	SE5	29.81R	
A. F. ACADEMY	DRIZZLE	34	30	86	VRB2	29.77R	
FORT CARSON	CLOUDY	36	32	87	SE12	29.81R	
LIMON	CLOUDY	30	27	88	N13	29.83R	WCI 20
MONUMENT HILL	FOG	25	N/A	N/A	NE6	29.79R	VSB 1/2 WCI 18
TRINIDAD	CLOUDY	36	31	82	CALM	29.83R	

\$\$

COZ042>045-048>051-090-091-301700-  
NORTHEAST COLORADO

CITY	SKY/WX	TMP	DP	RH	WIND	PRES	REMARKS
GREELEY ARPT	CLOUDY	27	25	93	N12	29.88R	WCI 16
AKRON	CLOUDY	29	22	75	N16	29.85R	WCI 17
BURLINGTON	CLOUDY	37	29	72	N16	29.81R	

\$\$

COZ086-089-092>099-301700-  
SOUTHEAST COLORADO

CITY	SKY/WX	TMP	DP	RH	WIND	PRES	REMARKS
PUEBLO	CLOUDY	42	31	64	SE12	29.83R	
LA JUNTA	CLOUDY	40	30	67	E8	29.85R	
LAMAR	PTSUNNY	42	31	64	NE12	29.84R	
SPRINGFIELD	N/A	42	28	57	N17	29.80R	

ASUS45 KBOU 301706  
SWRCO

COLORADO STATE WEATHER ROUNDUP

NATIONAL WEATHER SERVICE DENVER CO  
1000 AM MST THU OCT 30 2003

NOTE: "FAIR" INDICATES FEW OR NO CLOUDS BELOW 12000 FEET WITH NO  
SIGNIFICANT WEATHER AND/OR OBSTRUCTIONS TO VISIBILITY.

COZ001>005-013-030-031-301800-  
NORTHWEST COLORADO

CITY	SKY/WX	TMP	DP	RH	WIND	PRES	REMARKS
CRAIG	PTSUNNY	34	26	72	CALM	29.60F	
HAYDEN	MOSUNNY	34	25	69	CALM	29.60F	
MEEKER	PTSUNNY	44	25	47	VRB5	29.53F	

\$\$

COZ006>008-011-301800-  
WEST CENTRAL VALLEYS

CITY	SKY/WX	TMP	DP	RH	WIND	PRES	REMARKS
GRAND JUNCTION	MOSUNNY	64	23	21	S20G32	29.54F	
MONTROSE	SUNNY	63	21	20	SW12G24	29.63F	
EAGLE	NOT AVBL						
RIFLE	MOSUNNY	64	23	21	SW8	29.53F	

\$\$

COZ017>023-064>068-301800-  
SOUTHWEST COLORADO

CITY	SKY/WX	TMP	DP	RH	WIND	PRES	REMARKS
DURANGO	SUNNY	51	25	36	E8	29.87F	
CORTEZ	SUNNY	59	25	27	S18	29.77F	
WOLF CREEK PAS	PTSUNNY	28	21	74	SW25G39	29.94F	WCI 14

\$\$

COZ009-010-012-014-032>034-037-058>063-301800-  
CENTRAL COLORADO

CITY	SKY/WX	TMP	DP	RH	WIND	PRES	REMARKS
ASPEN	MOSUNNY	54	11	18	SE13	29.64F	SMOKE
COPPER MTN	FAIR	37	7	28	S16G32	29.80F	
GUNNISON	SUNNY	48	14	25	N7	29.72F	
KREMMLING	FAIR	57	21	24	SW15G21	29.59F	
LEADVILLE	SUNNY	43	10	26	S13G25	29.73F	HAZE
MONARCH PASS	FAIR	32	10	40	SW38	29.94F	WCI 16

\$\$

COZ069>075-301800-  
SAN LUIS VALLEY/SANGRE DE CRISTO MOUNTAINS

CITY	SKY/WX	TMP	DP	RH	WIND	PRES	REMARKS
ALAMOSA	SUNNY	54	21	27	S23G30	29.83F	
LA VETA PASS	FAIR	41	19	42	MISG	29.85S	

\$\$

COZ035-036-038>040-301800-  
NORTHERN COLORADO FRONT RANGE

CITY	SKY/WX	TMP	DP	RH	WIND	PRES	REMARKS
DENVER INTL AP	FRZ DRZL	26	25	96	N7	29.84F	VSB 1 WCI 18
AURORA	FRZ DRZL	27	27	100	N8	29.83F	FOG WCI 18
CENTENNIAL	CLOUDY	26	24	92	NE7	29.82F	FOG WCI 18
LOVELAND	CLOUDY	27	18	69	N7	29.89R	WCI 19

\$\$

COZ041-046-047-076>085-087-088-301800-  
PIKES PEAK/PALMER DIVIDE AND SOUTHERN FOOTHILLS

CITY	SKY/WX	TMP	DP	RH	WIND	PRES	REMARKS
COLO. SPRINGS	CLOUDY	36	34	92	SE15	29.81S	
A. F. ACADEMY	DRIZZLE	34	32	93	VRB7	29.77S	WCI 28
FORT CARSON	NOT AVBL						
LIMON	CLOUDY	30	26	85	N13	29.84R	WCI 20
MONUMENT HILL	FOG	23	N/A	N/A	E6	29.78F	VSB 1 WCI 16
TRINIDAD	CLOUDY	38	29	70	E5	29.83S	

\$\$

COZ042>045-048>051-090-091-301800-  
NORTHEAST COLORADO

CITY	SKY/WX	TMP	DP	RH	WIND	PRES	REMARKS
GREELEY ARPT	CLOUDY	27	25	93	N10	29.87S	WCI 17
AKRON	CLOUDY	29	23	78	N10	29.87R	WCI 20
BURLINGTON	CLOUDY	37	29	72	N14	29.84R	

\$\$

COZ086-089-092>099-301800-  
SOUTHEAST COLORADO

CITY	SKY/WX	TMP	DP	RH	WIND	PRES	REMARKS
PUEBLO	CLOUDY	43	30	60	E13	29.83S	
LA JUNTA	CLOUDY	40	30	67	SE3	29.86R	
LAMAR	CLOUDY	44	31	60	N8	29.86R	
SPRINGFIELD	N/A	43	29	57	N15G23	29.81R	

ASUS45 KBOU 301806  
SWRCO

COLORADO STATE WEATHER ROUNDUP  
NATIONAL WEATHER SERVICE DENVER CO  
1100 AM MST THU OCT 30 2003

NOTE: "FAIR" INDICATES FEW OR NO CLOUDS BELOW 12000 FEET WITH NO SIGNIFICANT WEATHER AND/OR OBSTRUCTIONS TO VISIBILITY.

COZ001>005-013-030-031-301900-  
NORTHWEST COLORADO

CITY	SKY/WX	TMP	DP	RH	WIND	PRES	REMARKS
CRAIG	CLOUDY	38	27	64	VRB6	29.59F	
HAYDEN	PTSUNNY	37	27	65	CALM	29.57F	
MEEKER	PTSUNNY	54	24	31	SW15G25	29.51F	

\$\$

COZ006>008-011-301900-

WEST CENTRAL VALLEYS

CITY	SKY/WX	TMP	DP	RH	WIND	PRES	REMARKS
GRAND JUNCTION	MOSUNNY	66	21	18	S20	29.53F	
MONTROSE	SUNNY	66	20	17	SW15G37	29.62F	
EAGLE	NOT AVBL						
RIFLE	MOSUNNY	66	21	18	SW24G39	29.51F	

\$\$

COZ017>023-064>068-301900-  
SOUTHWEST COLORADO

CITY	SKY/WX	TMP	DP	RH	WIND	PRES	REMARKS
DURANGO	SUNNY	56	25	30	S12	29.85F	
CORTEZ	SUNNY	62	25	24	S17G25	29.76F	
WOLF CREEK PAS	FAIR	32	21	64	SW26G41	29.94F	WCI 18

\$\$

COZ009-010-012-014-032>034-037-058>063-301900-  
CENTRAL COLORADO

CITY	SKY/WX	TMP	DP	RH	WIND	PRES	REMARKS
ASPEN	MOSUNNY	58	7	13	S28G39	29.61F	
COPPER MTN	FAIR	41	3	20	S29G35	29.79S	
GUNNISON	SUNNY	55	12	18	SW6	29.69F	
KREMMLING	FAIR	61	19	20	W26G45	29.55F	
LEADVILLE	SUNNY	48	6	18	S16G24	29.71F	
MONARCH PASS	FAIR	34	10	37	S36G47	29.94S	WCI 19

\$\$

COZ069>075-301900-  
SAN LUIS VALLEY/SANGRE DE CRISTO MOUNTAINS

CITY	SKY/WX	TMP	DP	RH	WIND	PRES	REMARKS
ALAMOSA	SUNNY	57	21	24	S26	29.82F	
LA VETA PASS	FAIR	45	19	36	MISG	29.84F	

\$\$

COZ035-036-038>040-301900-  
NORTHERN COLORADO FRONT RANGE

CITY	SKY/WX	TMP	DP	RH	WIND	PRES	REMARKS
DENVER INTL AP	FRZ DRZL	26	25	96	NE8	29.83F	VSB 1 WCI 18
AURORA	FRZ DRZL	27	27	100	N9	29.82F	FOG WCI 17
CENTENNIAL	FRZ DRZL	27	26	96	N8	29.80F	FOG WCI 19
BROOMFIELD	FOG	27	27	100	VRB6	29.84F	VSB 1 WCI 20
LOVELAND	CLOUDY	27	19	74	N6	29.88S	WCI 20

\$\$

COZ041-046-047-076>085-087-088-301900-  
PIKES PEAK/PALMER DIVIDE AND SOUTHERN FOOTHILLS

CITY	SKY/WX	TMP	DP	RH	WIND	PRES	REMARKS
COLO. SPRINGS	CLOUDY	36	33	89	S16	29.79F	
A. F. ACADEMY	DRIZZLE	32	32	100	S17	29.76F	FOG WCI 21
FORT CARSON	NOT AVBL						
LIMON	CLOUDY	32	26	78	NE8	29.83F	WCI 25



MONUMENT HILL FOG 25 N/A N/A E7 29.76F VSB 3/4 WCI 17  
 TRINIDAD CLOUDY 38 30 73 CALM 29.81F  
 \$\$

COZ042>045-048>051-090-091-301900-  
 NORTHEAST COLORADO

CITY	SKY/WX	TMP	DP	RH	WIND	PRES	REMARKS
GREELEY ARPT	CLOUDY	27	25	93	NE12	29.87F	WCI 16
AKRON	CLOUDY	30	23	75	N9	29.86F	WCI 22
BURLINGTON	CLOUDY	37	27	67	N15	29.85R	

\$\$

COZ086-089-092>099-301900-  
 SOUTHEAST COLORADO

CITY	SKY/WX	TMP	DP	RH	WIND	PRES	REMARKS
PUEBLO	CLOUDY	45	30	55	E9	29.81F	
LA JUNTA	CLOUDY	42	30	62	SE6	29.84F	
LAMAR	CLOUDY	44	31	60	N13	29.86S	
SPRINGFIELD	N/A	44	29	55	N13	29.80F	

ASUS45 KBOU 301906  
 SWRCO

COLORADO STATE WEATHER ROUNDUP  
 NATIONAL WEATHER SERVICE DENVER CO  
 1200 PM MST THU OCT 30 2003

NOTE: "FAIR" INDICATES FEW OR NO CLOUDS BELOW 12000 FEET WITH NO  
 SIGNIFICANT WEATHER AND/OR OBSTRUCTIONS TO VISIBILITY.

COZ001>005-013-030-031-302000-  
 NORTHWEST COLORADO

CITY	SKY/WX	TMP	DP	RH	WIND	PRES	REMARKS
CRAIG	PTSUNNY	40	28	62	W8	29.57F	
HAYDEN	PTSUNNY	43	25	49	W10G18	29.55F	
MEEKER	PTSUNNY	61	20	20	SW30G38	29.50F	

\$\$

COZ006>008-011-302000-  
 WEST CENTRAL VALLEYS

CITY	SKY/WX	TMP	DP	RH	WIND	PRES	REMARKS
GRAND JUNCTION	PTSUNNY	68	20	16	S25G39	29.51F	
MONTROSE	SUNNY	66	22	18	SW13G33	29.61F	
EAGLE	NOT AVBL						
RIFLE	MOSUNNY	67	21	17	SW23G31	29.50F	

\$\$

COZ017>023-064>068-302000-  
 SOUTHWEST COLORADO

CITY	SKY/WX	TMP	DP	RH	WIND	PRES	REMARKS
DURANGO	SUNNY	59	22	24	S16G23	29.83F	
CORTEZ	SUNNY	64	24	21	S28G39	29.73F	HAZE

WOLF CREEK PAS CLOUDY 36 21 55 SW31G40 29.93F  
\$\$

COZ009-010-012-014-032>034-037-058>063-302000-  
CENTRAL COLORADO

CITY	SKY/WX	TMP	DP	RH	WIND	PRES	REMARKS
ASPEN	MOSUNNY	61	6	11	S18G38	29.57F	
COPPER MTN	FAIR	41	1	19	S18G40	29.78S	
GUNNISON	SUNNY	61	10	13	NW8	29.66F	
KREMMLING	FAIR	61	19	20	W33G52	29.55S	
LEADVILLE	MOSUNNY	50	1	13	SW20G31	29.69F	
MONARCH PASS	FAIR	37	14	38	S29	29.93S	

\$\$

COZ069>075-302000-  
SAN LUIS VALLEY/SANGRE DE CRISTO MOUNTAINS

CITY	SKY/WX	TMP	DP	RH	WIND	PRES	REMARKS
ALAMOSA	SUNNY	59	20	22	SW21G30	29.78F	
LA VETA PASS	FAIR	46	18	31	MISG	29.82F	

\$\$

COZ035-036-038>040-302000-  
NORTHERN COLORADO FRONT RANGE

CITY	SKY/WX	TMP	DP	RH	WIND	PRES	REMARKS
DENVER INTL AP	FRZ DRZL	26	26	100	NE7	29.81F	VSB 1 WCI 18
AURORA	FRZ DRZL	28	28	100	NE9	29.80F	FOG WCI 20
CENTENNIAL	FRZ DRZL	27	25	92	NE8	29.78F	FOG WCI 19
LOVELAND	CLOUDY	27	19	74	N6	29.86F	WCI 20

\$\$

COZ041-046-047-076>085-087-088-302000-  
PIKES PEAK/PALMER DIVIDE AND SOUTHERN FOOTHILLS

CITY	SKY/WX	TMP	DP	RH	WIND	PRES	REMARKS
COLO. SPRINGS	CLOUDY	38	32	79	S20	29.77F	
A. F. ACADEMY	CLOUDY	34	32	93	SE17	29.73F	WCI 23
FORT CARSON	PTSUNNY	41	34	75	S21	29.76F	
LIMON	CLOUDY	34	26	72	NE6	29.80F	WCI 29
MONUMENT HILL	CLOUDY	27	N/A	N/A	E9	29.74F	FOG WCI 17
TRINIDAD	SUNNY	42	30	62	E9	29.78F	

\$\$

COZ042>045-048>051-090-091-302000-  
NORTHEAST COLORADO

CITY	SKY/WX	TMP	DP	RH	WIND	PRES	REMARKS
GREELEY ARPT	CLOUDY	28	27	93	NE9	29.85F	WCI 20
AKRON	CLOUDY	30	22	72	N9	29.85F	WCI 22
BURLINGTON	CLOUDY	38	27	64	N14	29.82F	

\$\$

COZ086-089-092>099-302000-  
SOUTHEAST COLORADO

CITY	SKY/WX	TMP	DP	RH	WIND	PRES	REMARKS
PUEBLO	CLOUDY	46	30	53	SE10	29.79F	
LA JUNTA	CLOUDY	43	31	62	E9	29.81F	
LAMAR	CLOUDY	44	31	60	N8	29.83F	
SPRINGFIELD	N/A	44	29	55	N13	29.79F	

ASUS45 KBOU 302006  
SWRCO

COLORADO STATE WEATHER ROUNDUP  
NATIONAL WEATHER SERVICE DENVER CO  
100 PM MST THU OCT 30 2003

NOTE: "FAIR" INDICATES FEW OR NO CLOUDS BELOW 12000 FEET WITH NO SIGNIFICANT WEATHER AND/OR OBSTRUCTIONS TO VISIBILITY.

COZ001>005-013-030-031-302100-  
NORTHWEST COLORADO

CITY	SKY/WX	TMP	DP	RH	WIND	PRES	REMARKS
CRAIG	PTSUNNY	41	27	57	SW6	29.55F	
HAYDEN	PTSUNNY	41	23	48	W15	29.55S	
MEEKER	PTSUNNY	61	19	19	SW28G36	29.49F	

\$\$

COZ006>008-011-302100-  
WEST CENTRAL VALLEYS

CITY	SKY/WX	TMP	DP	RH	WIND	PRES	REMARKS
GRAND JUNCTION	PTSUNNY	69	21	16	S23G40	29.48F	
MONTROSE	SUNNY	67	23	19	SW29G41	29.58F	
EAGLE	SUNNY	64	16	15	SW35G51	29.47	
RIFLE	MOSUNNY	67	20	16	SW30G44	29.48F	

\$\$

COZ017>023-064>068-302100-  
SOUTHWEST COLORADO

CITY	SKY/WX	TMP	DP	RH	WIND	PRES	REMARKS
DURANGO	SUNNY	61	23	23	S13G22	29.81F	
CORTEZ	SUNNY	66	24	20	S24G31	29.71F	
WOLF CREEK PAS	PTSUNNY	34	19	55	SW24G44	29.92F	WCI 21

\$\$

COZ009-010-012-014-032>034-037-058>063-302100-  
CENTRAL COLORADO

CITY	SKY/WX	TMP	DP	RH	WIND	PRES	REMARKS
ASPEN	MOSUNNY	62	7	11	S21G35	29.56F	
COPPER MTN	FAIR	43	1	17	SW31G48	29.77S	
GUNNISON	SUNNY	63	9	12	W22G35	29.62F	
KREMMLING	FAIR	63	21	20	SW22G43	29.52F	
LEADVILLE	SUNNY	53	3	13	S21G32	29.66F	
MONARCH PASS	FAIR	41	7	24	SW38G55	29.89F	

\$\$

COZ069>075-302100-

SAN LUIS VALLEY/SANGRE DE CRISTO MOUNTAINS

CITY	SKY/WX	TMP	DP	RH	WIND	PRES	REMARKS
ALAMOSA	SUNNY	61	19	19	SW25G31	29.76F	
LA VETA PASS	FAIR	46	16	29	MISG	29.82F	

\$\$

COZ035-036-038>040-302100-  
NORTHERN COLORADO FRONT RANGE

CITY	SKY/WX	TMP	DP	RH	WIND	PRES	REMARKS
DENVER INTL AP	FRZ DRZL	26	26	100	N10	29.80F	FOG WCI 16
AURORA	FRZ DRZL	28	28	100	NE9	29.79F	FOG WCI 20
CENTENNIAL	FRZ DRZL	27	26	96	N8	29.77F	FOG WCI 19
BROOMFIELD	FOG	27	27	100	NE6	29.82S	FSB 3/4 WCI 20
LOVELAND	CLOUDY	27	19	74	NE7	29.85F	WCI 19

\$\$

COZ041-046-047-076>085-087-088-302100-  
PIKES PEAK/PALMER DIVIDE AND SOUTHERN FOOTHILLS

CITY	SKY/WX	TMP	DP	RH	WIND	PRES	REMARKS
COLO. SPRINGS	CLOUDY	40	32	73	SE24	29.74F	
A. F. ACADEMY	CLOUDY	36	32	87	S14	29.70F	
FORT CARSON	PTSUNNY	41	28	60	S22G28	29.74F	
LIMON	CLOUDY	34	26	72	E6	29.79F	WCI 29
MONUMENT HILL	LGT SNOW	27	N/A	N/A	E8	29.73S	WCI 18
TRINIDAD	SUNNY	45	28	51	SE9	29.76F	

\$\$

COZ042>045-048>051-090-091-302100-  
NORTHEAST COLORADO

CITY	SKY/WX	TMP	DP	RH	WIND	PRES	REMARKS
GREELEY ARPT	CLOUDY	28	27	93	NE9	29.84F	WCI 20
AKRON	CLOUDY	30	21	69	N12	29.83F	WCI 20
BURLINGTON	CLOUDY	39	27	62	N10	29.80F	

\$\$

COZ086-089-092>099-302100-  
SOUTHEAST COLORADO

CITY	SKY/WX	TMP	DP	RH	WIND	PRES	REMARKS
PUEBLO	CLOUDY	46	30	53	SE12	29.76F	
LA JUNTA	CLOUDY	44	31	60	E10	29.79F	
LAMAR	CLOUDY	44	31	60	E7	29.81F	
SPRINGFIELD	N/A	46	30	53	NE9	29.77F	

ASUS45 KBOU 302106  
SWRCO

COLORADO STATE WEATHER ROUNDUP  
NATIONAL WEATHER SERVICE DENVER CO  
200 PM MST THU OCT 30 2003

NOTE: "FAIR" INDICATES FEW OR NO CLOUDS BELOW 12000 FEET WITH NO SIGNIFICANT WEATHER AND/OR OBSTRUCTIONS TO VISIBILITY.

COZ001>005-013-030-031-302200-  
NORTHWEST COLORADO

CITY	SKY/WX	TMP	DP	RH	WIND	PRES	REMARKS
CRAIG	PTSUNNY	45	26	47	VRB6	29.54F	
HAYDEN	PTSUNNY	39	23	52	NW10	29.54S	
MEEKER	PTSUNNY	61	18	18	SW20G36	29.48F	

\$\$

COZ006>008-011-302200-  
WEST CENTRAL VALLEYS

CITY	SKY/WX	TMP	DP	RH	WIND	PRES	REMARKS
GRAND JUNCTION	PTSUNNY	69	22	16	SW20G33	29.47F	
MONTROSE	MOSUNNY	68	25	19	S23G37	29.57F	
EAGLE	NOT AVBL						
RIFLE	PTSUNNY	68	22	17	SW21G33	29.48S	

\$\$

COZ017>023-064>068-302200-  
SOUTHWEST COLORADO

CITY	SKY/WX	TMP	DP	RH	WIND	PRES	REMARKS
DURANGO	SUNNY	63	21	20	S20G26	29.79F	
CORTEZ	SUNNY	66	25	21	S18G29	29.69F	
WOLF CREEK PAS	CLOUDY	34	19	55	SW25G45	29.92F	WCI 21

\$\$

COZ009-010-012-014-032>034-037-058>063-302200-  
CENTRAL COLORADO

CITY	SKY/WX	TMP	DP	RH	WIND	PRES	REMARKS
ASPEN	MOSUNNY	61	6	11	S22G32	29.55F	
COPPER MTN	FAIR	45	0	15	S25G43	29.74S	
GUNNISON	SUNNY	63	10	13	S17G32	29.62S	
KREMMLING	FAIR	63	19	19	W30G48	29.50F	
LEADVILLE	SUNNY	53	1	12	SW26G35	29.65F	
MONARCH PASS	FAIR	43	7	22	SW45G58	29.86F	

\$\$

COZ069>075-302200-  
SAN LUIS VALLEY/SANGRE DE CRISTO MOUNTAINS

CITY	SKY/WX	TMP	DP	RH	WIND	PRES	REMARKS
ALAMOSA	HAZE	61	18	18	SW35G45	29.74S	VSB 3/4
LA VETA PASS	FAIR	46	16	29	MISG	29.81F	

\$\$

COZ035-036-038>040-302200-  
NORTHERN COLORADO FRONT RANGE

CITY	SKY/WX	TMP	DP	RH	WIND	PRES	REMARKS
DENVER INTL AP	FRZ DRZL	27	26	96	NE7	29.80S	FOG WCI 19
AURORA	FRZ DRZL	28	28	100	N8	29.79S	FOG WCI 20
CENTENNIAL	FRZ DRZL	27	26	96	N8	29.77S	FOG WCI 19
BROOMFIELD	FOG	27	27	100	NE9	29.81F	VSB 7/8 WCI 17

LOVELAND CLOUDY 27 19 74 NE9 29.84S WCI 17  
\$\$

COZ041-046-047-076>085-087-088-302200-  
PIKES PEAK/PALMER DIVIDE AND SOUTHERN FOOTHILLS

CITY	SKY/WX	TMP	DP	RH	WIND	PRES	REMARKS
COLO. SPRINGS	PTSUNNY	39	32	76	S20	29.74S	
A. F. ACADEMY	CLOUDY	37	30	75	S17	29.71S	
FORT CARSON	PTSUNNY	41	28	60	S15	29.74S	
LIMON	CLOUDY	35	26	69	E8	29.79S	WCI 29
MONUMENT HILL	FOG	25	N/A	N/A	E8	29.73R	VSB 1/4 WCI 16
TRINIDAD	MOSUNNY	48	29	47	E9	29.72F	

\$\$

COZ042>045-048>051-090-091-302200-  
NORTHEAST COLORADO

CITY	SKY/WX	TMP	DP	RH	WIND	PRES	REMARKS
GREELEY ARPT	CLOUDY	28	27	93	NE12	29.83S	WCI 18
AKRON	CLOUDY	29	21	72	NE13	29.83S	WCI 19
BURLINGTON	CLOUDY	39	26	59	NE10	29.80S	

\$\$

COZ086-089-092>099-302200-  
SOUTHEAST COLORADO

CITY	SKY/WX	TMP	DP	RH	WIND	PRES	REMARKS
PUEBLO	PTSUNNY	47	30	51	E16	29.75F	
LA JUNTA	CLOUDY	45	31	58	E12	29.77F	
LAMAR	CLOUDY	45	31	58	E8	29.80F	
SPRINGFIELD	N/A	45	30	55	NE6	29.76F	

ASUS45 KBOU 302206  
SWRCO

COLORADO STATE WEATHER ROUNDUP  
NATIONAL WEATHER SERVICE DENVER CO  
300 PM MST THU OCT 30 2003

NOTE: "FAIR" INDICATES FEW OR NO CLOUDS BELOW 12000 FEET WITH NO  
SIGNIFICANT WEATHER AND/OR OBSTRUCTIONS TO VISIBILITY.

COZ001>005-013-030-031-302300-  
NORTHWEST COLORADO

CITY	SKY/WX	TMP	DP	RH	WIND	PRES	REMARKS
CRAIG	PTSUNNY	42	23	46	NW7	29.55R	
HAYDEN	PTSUNNY	41	21	45	NW8	29.55R	
MEEKER	PTSUNNY	60	20	21	SW17G38	29.49R	

\$\$

COZ006>008-011-302300-  
WEST CENTRAL VALLEYS

CITY	SKY/WX	TMP	DP	RH	WIND	PRES	REMARKS
GRAND JUNCTION	PTSUNNY	70	23	17	S22G35	29.45F	BLWGDUST

MONTROSE        MOSUNNY    68 25 19 SW21G33    29.58R  
 EAGLE            NOT AVBL  
 RIFLE            PTSUNNY    65 22 19 SW20G33    29.49R  
 \$\$

COZ017>023-064>068-302300-  
 SOUTHWEST COLORADO

CITY	SKY/WX	TMP	DP	RH	WIND	PRES	REMARKS
DURANGO	MOSUNNY	63	20	19	SW14	29.78F	
CORTEZ	SUNNY	66	22	18	S30G37	29.67F	HAZE
WOLF CREEK PAS	PTSUNNY	36	19	51	SW23G38	29.91F	

\$\$

COZ009-010-012-014-032>034-037-058>063-302300-  
 CENTRAL COLORADO

CITY	SKY/WX	TMP	DP	RH	WIND	PRES	REMARKS
ASPEN	MOSUNNY	60	8	12	S24G32	29.57R	
COPPER MTN	FAIR	45	0	15	SW24G45	29.77R	
GUNNISON	SUNNY	61	9	12	S17G24	29.63R	
KREMMLING	FAIR	63	19	19	W23G39	29.52R	
LEADVILLE	SUNNY	52	1	12	SW14G36	29.66R	
MONARCH PASS	FAIR	41	7	24	SW46G66	29.85S	

\$\$

COZ069>075-302300-  
 SAN LUIS VALLEY/SANGRE DE CRISTO MOUNTAINS

CITY	SKY/WX	TMP	DP	RH	WIND	PRES	REMARKS
ALAMOSA	MOSUNNY	60	17	18	SW29G44	29.76R	HAZE
LA VETA PASS	FAIR	46	16	29	MISG	29.84R	

\$\$

COZ035-036-038>040-302300-  
 NORTHERN COLORADO FRONT RANGE

CITY	SKY/WX	TMP	DP	RH	WIND	PRES	REMARKS
DENVER INTL AP	FRZ DRZL	27	25	92	NE7	29.81R	FOG WCI 19
AURORA	FRZ DRZL	27	27	100	N10	29.80R	FOG WCI 17
CENTENNIAL	FRZ DRZL	27	26	96	N12	29.79R	FOG WCI 17
LOVELAND	CLOUDY	27	19	74	NE8	29.86R	WCI 18

\$\$

COZ041-046-047-076>085-087-088-302300-  
 PIKES PEAK/PALMER DIVIDE AND SOUTHERN FOOTHILLS

CITY	SKY/WX	TMP	DP	RH	WIND	PRES	REMARKS
COLO. SPRINGS	PTSUNNY	38	31	76	SE17	29.75R	
A. F. ACADEMY	CLOUDY	36	30	80	SE15G23	29.71S	
FORT CARSON	CLOUDY	39	28	65	SE16	29.74S	
LIMON	CLOUDY	35	25	66	E8	29.80R	WCI 29
MONUMENT HILL	FOG	25	N/A	N/A	E9	29.73S	VSB 1/2 WCI 15
TRINIDAD	MOSUNNY	49	28	44	E8	29.72S	

\$\$

COZ042>045-048>051-090-091-302300-

NORTHEAST COLORADO

CITY	SKY/WX	TMP	DP	RH	WIND	PRES	REMARKS
GREELEY ARPT	CLOUDY	28	25	86	NE12	29.85R	WCI 18
AKRON	CLOUDY	28	24	85	N9	29.85R	WCI 19
BURLINGTON	CLOUDY	39	25	57	NE12	29.81S	

\$\$

COZ086-089-092>099-302300-  
SOUTHEAST COLORADO

CITY	SKY/WX	TMP	DP	RH	WIND	PRES	REMARKS
PUEBLO	MOSUNNY	48	30	49	E13G20	29.75S	
LA JUNTA	PTSUNNY	47	31	53	E14	29.77S	
LAMAR	PTSUNNY	46	31	55	E6	29.81R	
SPRINGFIELD	N/A	47	30	51	E8	29.77R	

ASUS45 KBOU 302306  
SWRCO

COLORADO STATE WEATHER ROUNDUP  
NATIONAL WEATHER SERVICE DENVER CO  
400 PM MST THU OCT 30 2003

NOTE: "FAIR" INDICATES FEW OR NO CLOUDS BELOW 12000 FEET WITH NO SIGNIFICANT WEATHER AND/OR OBSTRUCTIONS TO VISIBILITY.

COZ001>005-013-030-031-310000-  
NORTHWEST COLORADO

CITY	SKY/WX	TMP	DP	RH	WIND	PRES	REMARKS
CRAIG	PTSUNNY	41	22	46	CALM	29.56R	
HAYDEN	PTSUNNY	39	19	45	NW8	29.56R	
MEEKER	CLOUDY	60	22	23	SW22G32	29.49S	

\$\$

COZ006>008-011-310000-  
WEST CENTRAL VALLEYS

CITY	SKY/WX	TMP	DP	RH	WIND	PRES	REMARKS
GRAND JUNCTION	MOSUNNY	69	22	16	S15G28	29.45S	BLWGDUST
MONTROSE	MOSUNNY	66	25	21	SW23G29	29.59R	
EAGLE	SUNNY	61	16	17	SW28G44	29.49F	
RIFLE	PTSUNNY	65	24	21	SW16G24	29.49S	

\$\$

COZ017>023-064>068-310000-  
SOUTHWEST COLORADO

CITY	SKY/WX	TMP	DP	RH	WIND	PRES	REMARKS
DURANGO	MOSUNNY	62	20	19	S16	29.78S	
CORTEZ	SUNNY	65	21	18	SW24G30	29.68R	

\$\$

COZ009-010-012-014-032>034-037-058>063-310000-  
CENTRAL COLORADO



CITY	SKY/WX	TMP	DP	RH	WIND	PRES	REMARKS
ASPEN	MOSUNNY	58	9	14	NE8	29.58R	
COPPER MTN	FAIR	43	1	17	S23G32	29.76S	
GUNNISON	MOSUNNY	61	9	12	SW9G22	29.65R	
KREMMLING	FAIR	57	21	24	W32G43	29.54R	
LEADVILLE	MOSUNNY	50	2	14	S21G37	29.67R	
MONARCH PASS	FAIR	37	9	30	SW44G56	29.88R	

\$\$

COZ069>075-310000-  
SAN LUIS VALLEY/SANGRE DE CRISTO MOUNTAINS

CITY	SKY/WX	TMP	DP	RH	WIND	PRES	REMARKS
ALAMOSA	SUNNY	58	15	18	SW37G43	29.77R	HAZE
LA VETA PASS	FAIR	45	14	29	MISG	29.83F	

\$\$

COZ035-036-038>040-310000-  
NORTHERN COLORADO FRONT RANGE

CITY	SKY/WX	TMP	DP	RH	WIND	PRES	REMARKS
DENVER INTL AP	FRZ DRZL	27	26	96	NE8	29.83R	FOG WCI 19
AURORA	FRZ DRZL	27	27	100	N8	29.82R	FOG WCI 18
CENTENNIAL	FRZ DRZL	27	25	92	N10	29.81R	FOG WCI 17
BROOMFIELD	FOG	27	27	100	NE9	29.84R	VSB 1 WCI 17
LOVELAND	CLOUDY	27	19	74	NE8	29.88R	WCI 18

\$\$

COZ041-046-047-076>085-087-088-310000-  
PIKES PEAK/PALMER DIVIDE AND SOUTHERN FOOTHILLS

CITY	SKY/WX	TMP	DP	RH	WIND	PRES	REMARKS
COLO. SPRINGS	PTSUNNY	37	31	78	SE16	29.76R	
A. F. ACADEMY	CLOUDY	36	28	75	SE12	29.74R	
FORT CARSON	CLOUDY	39	28	65	SE16	29.76R	
LIMON	CLOUDY	34	24	67	E12	29.81R	WCI 25
MONUMENT HILL	CLOUDY	23	N/A	N/A	E6	29.76R	FOG WCI 16
TRINIDAD	PTSUNNY	51	28	41	NE8	29.73R	

\$\$

COZ042>045-048>051-090-091-310000-  
NORTHEAST COLORADO

CITY	SKY/WX	TMP	DP	RH	WIND	PRES	REMARKS
GREELEY ARPT	CLOUDY	27	25	93	NE10	29.87R	WCI 17
AKRON	CLOUDY	27	25	92	N13	29.87R	FOG WCI 16
BURLINGTON	CLOUDY	38	25	59	NE9	29.83R	

\$\$

COZ086-089-092>099-310000-  
SOUTHEAST COLORADO

CITY	SKY/WX	TMP	DP	RH	WIND	PRES	REMARKS
PUEBLO	MOSUNNY	46	29	51	E15	29.76R	
LA JUNTA	PTCLDY	45	30	55	E16	29.78R	
LAMAR	CLOUDY	46	31	55	E10	29.82R	

SPRINGFIELD N/A 47 31 53 E10 29.78R

ASUS45 KBOU 310006  
SWRCO

COLORADO STATE WEATHER ROUNDUP  
NATIONAL WEATHER SERVICE DENVER CO  
500 PM MST THU OCT 30 2003

NOTE: "FAIR" INDICATES FEW OR NO CLOUDS BELOW 12000 FEET WITH NO  
SIGNIFICANT WEATHER AND/OR OBSTRUCTIONS TO VISIBILITY.

COZ001>005-013-030-031-310100-  
NORTHWEST COLORADO

CITY	SKY/WX	TMP	DP	RH	WIND	PRES	REMARKS
CRAIG	CLOUDY	37	21	52	W14	29.63R	
HAYDEN	MOCLDY	37	19	48	W15	29.60R	
MEEKER	CLOUDY	45	18	34	N22	29.52R	

\$\$

COZ006>008-011-310100-  
WEST CENTRAL VALLEYS

CITY	SKY/WX	TMP	DP	RH	WIND	PRES	REMARKS
GRAND JUNCTION	PTCLDY	69	20	15	S15	29.45S	BLWGDUST
MONTROSE	CLEAR	65	25	22	SW21G32	29.59S	
EAGLE	CLEAR	61	16	17	SW30G44	29.50R	
RIFLE	MOCLDY	65	24	21	S26G37	29.47F	HAZE

\$\$

COZ017>023-064>068-310100-  
SOUTHWEST COLORADO

CITY	SKY/WX	TMP	DP	RH	WIND	PRES	REMARKS
DURANGO	CLEAR	60	20	21	S18G24	29.78S	
CORTEZ	CLEAR	63	20	19	SW20G28	29.69R	
WOLF CREEK PAS	CLOUDY	34	19	55	SW20G40	29.92R	WCI 22

\$\$

COZ009-010-012-014-032>034-037-058>063-310100-  
CENTRAL COLORADO

CITY	SKY/WX	TMP	DP	RH	WIND	PRES	REMARKS
ASPEN	PTCLDY	55	9	16	S13	29.60R	
COPPER MTN	FAIR	39	0	19	S35G47	29.77S	
GUNNISON	CLEAR	57	9	14	SW15G24	29.66R	
KREMMLING	FAIR	57	21	24	SW23G40	29.55R	
LEADVILLE	CLEAR	47	3	16	S15G29	29.70R	
MONARCH PASS	FAIR	36	9	32	SW45G54	29.89F	

\$\$

COZ069>075-310100-  
SAN LUIS VALLEY/SANGRE DE CRISTO MOUNTAINS

CITY	SKY/WX	TMP	DP	RH	WIND	PRES	REMARKS
ALAMOSA	CLEAR	55	16	21	SW25G32	29.79R	

LA VETA PASS FAIR 41 14 33 MISG 29.84S  
\$\$

COZ035-036-038>040-310100-  
NORTHERN COLORADO FRONT RANGE

CITY	SKY/WX	TMP	DP	RH	WIND	PRES	REMARKS
DENVER INTL AP	FRZ DRZL	26	26	100	NE10	29.85R	FOG WCI 16
AURORA	FRZ DRZL	27	27	100	N8	29.84R	FOG WCI 18
CENTENNIAL	FRZ DRZL	27	25	92	N8	29.83R	FOG WCI 19
BROOMFIELD	N/A	27	27	100	NE9	29.86R	FOG WCI 17
LOVELAND	CLOUDY	27	19	74	NE8	29.89R	WCI 18

\$\$

COZ041-046-047-076>085-087-088-310100-  
PIKES PEAK/PALMER DIVIDE AND SOUTHERN FOOTHILLS

CITY	SKY/WX	TMP	DP	RH	WIND	PRES	REMARKS
COLO. SPRINGS	MOCLDY	36	31	82	SE16	29.80R	
A. F. ACADEMY	CLOUDY	34	28	80	SE10	29.76R	WCI 26
FORT CARSON	CLOUDY	37	28	70	SE16	29.79R	
LIMON	CLOUDY	33	23	66	E9	29.84R	WCI 25
MONUMENT HILL	CLOUDY	23	N/A	N/A	NE5	29.78R	FOG WCI 17
TRINIDAD	PTCLDY	45	27	49	E6	29.74R	

\$\$

COZ042>045-048>051-090-091-310100-  
NORTHEAST COLORADO

CITY	SKY/WX	TMP	DP	RH	WIND	PRES	REMARKS
GREELEY ARPT	CLOUDY	27	25	93	NE13	29.89R	WCI 16
AKRON	CLOUDY	27	26	96	N8	29.88R	FOG WCI 19
BURLINGTON	CLOUDY	36	25	64	N10	29.85R	

\$\$

COZ086-089-092>099-310100-  
SOUTHEAST COLORADO

CITY	SKY/WX	TMP	DP	RH	WIND	PRES	REMARKS
PUEBLO	PTCLDY	43	29	57	NE12	29.78R	
LA JUNTA	CLOUDY	43	30	60	E15	29.79R	
LAMAR	CLOUDY	44	31	60	E10	29.83R	
SPRINGFIELD	N/A	44	30	57	E12	29.79R	

ASUS45 KBOU 310106  
SWRCO

COLORADO STATE WEATHER ROUNDUP  
NATIONAL WEATHER SERVICE DENVER CO  
600 PM MST THU OCT 30 2003

NOTE: "FAIR" INDICATES FEW OR NO CLOUDS BELOW 12000 FEET WITH NO  
SIGNIFICANT WEATHER AND/OR OBSTRUCTIONS TO VISIBILITY.

COZ001>005-013-030-031-310200-  
NORTHWEST COLORADO

CITY	SKY/WX	TMP	DP	RH	WIND	PRES	REMARKS
CRAIG	CLOUDY	30	15	53	W10	29.71R	WCI 21
HAYDEN	MOCLDY	34	18	51	W17	29.69R	WCI 23
MEEKER	CLOUDY	35	17	47	N21G28	29.64R	WCI 24

\$\$

COZ006>008-011-310200-  
WEST CENTRAL VALLEYS

CITY	SKY/WX	TMP	DP	RH	WIND	PRES	REMARKS
GRAND JUNCTION	MOCLDY	65	19	17	W5	29.48R	BLWGDUST
MONTROSE	PTCLDY	64	24	21	S17	29.60R	
EAGLE	NOT AVBL						
RIFLE	CLOUDY	65	24	21	S20G38	29.48R	

\$\$

COZ017>023-064>068-310200-  
SOUTHWEST COLORADO

CITY	SKY/WX	TMP	DP	RH	WIND	PRES	REMARKS
DURANGO	CLEAR	57	20	23	S10	29.79R	
CORTEZ	CLEAR	60	20	21	SW18	29.72R	
WOLF CREEK PAS	CLOUDY	34	18	51	SW22G41	29.93S	WCI 22

\$\$

COZ009-010-012-014-032>034-037-058>063-310200-  
CENTRAL COLORADO

CITY	SKY/WX	TMP	DP	RH	WIND	PRES	REMARKS
ASPEN	PTCLDY	55	11	17	S9G24	29.62R	
COPPER MTN	FAIR	39	3	22	SW25G47	29.79R	
GUNNISON	PTCLDY	52	10	19	S14	29.69R	
KREMMLING	FAIR	57	21	24	SW22G45	29.56R	
LEADVILLE	PTCLDY	44	2	17	SW12	29.72R	
MONARCH PASS	FAIR	32	12	43	S39G47	29.92R	WCI 16

\$\$

COZ069>075-310200-  
SAN LUIS VALLEY/SANGRE DE CRISTO MOUNTAINS

CITY	SKY/WX	TMP	DP	RH	WIND	PRES	REMARKS
ALAMOSA	CLEAR	51	17	26	SW13	29.81R	

\$\$

COZ035-036-038>040-310200-  
NORTHERN COLORADO FRONT RANGE

CITY	SKY/WX	TMP	DP	RH	WIND	PRES	REMARKS
DENVER INTL AP	FRZ DRZL	26	25	96	E8	29.87R	FOG WCI 18
AURORA	FRZ DRZL	27	27	100	NE8	29.86R	FOG WCI 18
CENTENNIAL	FRZ DRZL	26	25	96	NE6	29.85R	FOG WCI 19
BROOMFIELD	FRZ DRZL	27	25	93	N8	29.88R	WCI 18
LOVELAND	CLOUDY	27	19	74	E9	29.91R	WCI 17

\$\$

COZ041-046-047-076>085-087-088-310200-  
PIKES PEAK/PALMER DIVIDE AND SOUTHERN FOOTHILLS

CITY	SKY/WX	TMP	DP	RH	WIND	PRES	REMARKS
COLO. SPRINGS	CLOUDY	35	30	82	SE15	29.82R	WCI 25
FORT CARSON	NOT AVBL						
LIMON	CLOUDY	30	25	81	NE12	29.87R	WCI 20
MONUMENT HILL	MIX PCPN	21	N/A	N/A	E5	29.81R	VSB 3/4 WCI 15
TRINIDAD	PTCLDY	41	27	57	N8	29.77R	

\$\$

COZ042>045-048>051-090-091-310200-  
NORTHEAST COLORADO

CITY	SKY/WX	TMP	DP	RH	WIND	PRES	REMARKS
GREELEY ARPT	CLOUDY	27	25	93	NE12	29.90S	WCI 16
AKRON	FRZ RAIN	27	27	100	N8	29.92R	FOG WCI 19
BURLINGTON	CLOUDY	35	25	66	NE14	29.89R	WCI 26

\$\$

COZ086-089-092>099-310200-  
SOUTHEAST COLORADO

CITY	SKY/WX	TMP	DP	RH	WIND	PRES	REMARKS
PUEBLO	PTCLDY	42	29	59	E10	29.82R	
LA JUNTA	PTCLDY	40	30	67	E12	29.84R	
LAMAR	CLOUDY	43	31	62	E10	29.86R	
SPRINGFIELD	N/A	38	29	70	E8	29.82R	

SWRCO

COLORADO STATE WEATHER ROUNDUP  
NATIONAL WEATHER SERVICE DENVER CO  
700 PM MST THU OCT 30 2003

NOTE: "FAIR" INDICATES FEW OR NO CLOUDS BELOW 12000 FEET WITH NO SIGNIFICANT WEATHER AND/OR OBSTRUCTIONS TO VISIBILITY.

COZ001>005-013-030-031-310300-  
NORTHWEST COLORADO

CITY	SKY/WX	TMP	DP	RH	WIND	PRES	REMARKS
CRAIG	CLOUDY	28	16	60	SW16	29.78R	WCI 16
HAYDEN	CLOUDY	28	16	59	W15	29.75R	WCI 17
MEEKER	CLOUDY	31	16	54	NE12	29.74R	WCI 22

\$\$

COZ006>008-011-310300-  
WEST CENTRAL VALLEYS

CITY	SKY/WX	TMP	DP	RH	WIND	PRES	REMARKS
GRAND JUNCTION	MOCLDY	66	18	15	SW14	29.51R	HAZE
MONTROSE	PTCLDY	63	24	22	SW14G24	29.64R	
EAGLE	NOT AVBL						
RIFLE	MOCLDY	61	23	23	NW21	29.54R	

\$\$

COZ017>023-064>068-310300-  
SOUTHWEST COLORADO

CITY	SKY/WX	TMP	DP	RH	WIND	PRES	REMARKS
DURANGO	CLEAR	56	19	23	S17G25	29.83R	
CORTEZ	CLEAR	57	21	24	SW15	29.75R	
WOLF CREEK PAS	CLOUDY	34	19	55	SW32G48	29.95R	WCI 20

\$\$

COZ009-010-012-014-032>034-037-058>063-310300-  
CENTRAL COLORADO

CITY	SKY/WX	TMP	DP	RH	WIND	PRES	REMARKS
ASPEN	MOCLDY	55	11	17	SW14G26	29.65R	
COPPER MTN	FAIR	36	1	23	SW25G43	29.82R	
GUNNISON	PTCLDY	52	10	19	S13G21	29.72R	
KREMMLING	CLOUDY	57	21	24	W35G49	29.58R	
LEADVILLE	PTCLDY	43	8	23	S17G30	29.74R	
MONARCH PASS	FAIR	32	12	43	SW40G47	29.95R	WCI 16

\$\$

COZ069>075-310300-  
SAN LUIS VALLEY/SANGRE DE CRISTO MOUNTAINS

CITY	SKY/WX	TMP	DP	RH	WIND	PRES	REMARKS
ALAMOSA	CLEAR	48	16	27	S13	29.82R	

\$\$

COZ035-036-038>040-310300-  
NORTHERN COLORADO FRONT RANGE

CITY	SKY/WX	TMP	DP	RH	WIND	PRES	REMARKS
DENVER INTL AP	FRZ DRZL	26	26	100	E7	29.89R	FOG WCI 18
AURORA	FRZ DRZL	27	27	100	E7	29.89R	FOG WCI 19
CENTENNIAL	LGT SNOW	26	24	92	E7	29.87R	FOG WCI 18
BROOMFIELD	FRZ DRZL	27	27	100	NE9	29.90R	WCI 17
LOVELAND	CLOUDY	25	18	74	E8	29.93R	WCI 16

\$\$

COZ041-046-047-076>085-087-088-310300-  
PIKES PEAK/PALMER DIVIDE AND SOUTHERN FOOTHILLS

CITY	SKY/WX	TMP	DP	RH	WIND	PRES	REMARKS
COLO. SPRINGS	CLOUDY	35	30	82	SE12	29.85R	WCI 27
FORT CARSON	CLOUDY	37	28	70	S14	29.84R	
LIMON	CLOUDY	30	24	78	NE10	29.89R	WCI 21
MONUMENT HILL	SNOW	21	N/A	N/A	E5	29.83R	VSB 1/4 WCI 15
TRINIDAD	CLEAR	37	27	67	N12	29.81R	

\$\$

COZ042>045-048>051-090-091-310300-  
NORTHEAST COLORADO

CITY	SKY/WX	TMP	DP	RH	WIND	PRES	REMARKS
GREELEY ARPT	N/A	27	25	93	NE10	29.93R	WCI 17
AKRON	FRZ RAIN	27	27	100	N9	29.93R	FOG WCI 18
BURLINGTON	CLOUDY	34	25	69	N13	29.92R	WCI 25

\$\$

COZ086-089-092>099-310300-  
SOUTHEAST COLORADO

CITY	SKY/WX	TMP	DP	RH	WIND	PRES	REMARKS
PUEBLO	CLOUDY	42	29	59	E9	29.86R	
LA JUNTA	PTCLDY	38	29	70	E13	29.86R	
LAMAR	CLOUDY	43	31	62	E10	29.90R	
SPRINGFIELD	N/A	35	29	78	E8	29.83R	WCI 29

ASUS45 KBOU 310306  
SWRCO

COLORADO STATE WEATHER ROUNDUP  
NATIONAL WEATHER SERVICE DENVER CO  
800 PM MST THU OCT 30 2003

NOTE: "FAIR" INDICATES FEW OR NO CLOUDS BELOW 12000 FEET WITH NO  
SIGNIFICANT WEATHER AND/OR OBSTRUCTIONS TO VISIBILITY.

COZ001>005-013-030-031-310400-  
NORTHWEST COLORADO

CITY	SKY/WX	TMP	DP	RH	WIND	PRES	REMARKS
CRAIG	LGT SNOW	23	21	92	SW17	29.84R	FOG WCI 9
HAYDEN	MOCLDY	27	16	63	W13	29.80R	WCI 16
MEEKER	CLOUDY	28	17	63	NE12	29.79R	WCI 18

\$\$

COZ006>008-011-310400-  
WEST CENTRAL VALLEYS

CITY	SKY/WX	TMP	DP	RH	WIND	PRES	REMARKS
GRAND JUNCTION	MOCLDY	63	21	20	W20G36	29.55R	
MONTROSE	PTCLDY	62	25	24	S13G32	29.67R	
EAGLE	NOT AVBL						
RIFLE	CLOUDY	41	19	41	NW33G40	29.60R	

\$\$

COZ017>023-064>068-310400-  
SOUTHWEST COLORADO

CITY	SKY/WX	TMP	DP	RH	WIND	PRES	REMARKS
DURANGO	CLEAR	54	18	24	S15G22	29.85R	
CORTEZ	CLEAR	57	21	24	SW18	29.79R	
WOLF CREEK PAS	CLOUDY	32	18	55	SW33G49	29.96S	WCI 17

\$\$

COZ009-010-012-014-032>034-037-058>063-310400-  
CENTRAL COLORADO

CITY	SKY/WX	TMP	DP	RH	WIND	PRES	REMARKS
ASPEN	MOCLDY	54	12	18	S13G18	29.67R	
COPPER MTN	FAIR	36	5	27	S25G35	29.83R	
GUNNISON	CLEAR	50	10	20	SW5	29.74R	
KREMMLING	CLOUDY	55	25	30	SW26G39	29.60R	
LEADVILLE	CLEAR	43	7	22	SW20G28	29.76R	
MONARCH PASS	FAIR	30	14	51	S35G43	29.97S	WCI 14

\$\$

COZ069>075-310400-  
SAN LUIS VALLEY/SANGRE DE CRISTO MOUNTAINS

CITY	SKY/WX	TMP	DP	RH	WIND	PRES	REMARKS
ALAMOSA	CLEAR	47	17	30	S15	29.85R	
LA VETA PASS	FAIR	39	16	38	MISG	29.91S	

COZ035-036-038>040-310400-  
NORTHERN COLORADO FRONT RANGE

CITY	SKY/WX	TMP	DP	RH	WIND	PRES	REMARKS
DENVER INTL AP	CLOUDY	26	25	96	E6	29.90R	WCI 19
AURORA	FRZ DRZL	27	27	100	E7	29.89S	FOG WCI 19
CENTENNIAL	LGT SNOW	26	25	96	E8	29.88R	FOG WCI 18
BROOMFIELD	N/A	27	27	100	NE9	29.91R	WCI 17
LOVELAND	CLOUDY	25	19	80	E8	29.95R	WCI 16

COZ041-046-047-076>085-087-088-310400-  
PIKES PEAK/PALMER DIVIDE AND SOUTHERN FOOTHILLS

CITY	SKY/WX	TMP	DP	RH	WIND	PRES	REMARKS
COLO. SPRINGS	CLOUDY	35	30	82	SE13	29.86R	WCI 26
FORT CARSON	CLOUDY	36	28	75	S13	29.86R	
LIMON	CLOUDY	28	25	86	E8	29.90R	WCI 20
MONUMENT HILL	FOG	21	N/A	N/A	E5	29.84R	VSB 1/4 WCI 15
TRINIDAD	CLEAR	34	26	72	NW9	29.84R	WCI 27

COZ042>045-048>051-090-091-310400-  
NORTHEAST COLORADO

CITY	SKY/WX	TMP	DP	RH	WIND	PRES	REMARKS
GREELEY ARPT	CLOUDY	27	25	93	NE7	29.94R	WCI 19
AKRON	LGT SNOW	27	26	96	NE9	29.94R	VSB 1 WCI 18
BURLINGTON	CLOUDY	34	24	67	NE10	29.93R	WCI 26

COZ086-089-092>099-310400-  
SOUTHEAST COLORADO

CITY	SKY/WX	TMP	DP	RH	WIND	PRES	REMARKS
PUEBLO	CLOUDY	42	29	59	E8	29.88R	
LA JUNTA	PTCLDY	36	29	75	E10	29.87R	
LAMAR	CLOUDY	42	30	62	E13	29.90S	
SPRINGFIELD	N/A	32	26	78	E6	29.86R	WCI 26